

# CTDSP2 antibody



Catalog Number: 109721

## Product name

CTDSP2 antibody

## Specificity

human; other species not tested.

## Antibody description

CTDSP2 Rabbit Polyclonal antibody. Positive WB detected in human kidney tissue, HepG2 cells, K-562 cells. Positive IHC detected in human pancreas cancer. Observed molecular weight by Western-blot: 31 kDa

## Preparation

This antibody was obtained by immunization of CTDSP2 recombinant protein (Accession Number: NM\_005730). Purification method: Antigen affinity purified.

## Formulation

PBS with 0.1% sodium azide and 50% glycerol pH 7.3.

## Storage

Store at -20°C. DO NOT ALIQUOT

## Clonality

Polyclonal

## Ig Type

Rabbit IgG

## Applications

ELISA, WB, IHC

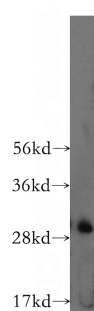
## Dilutions

Recommended Dilution:

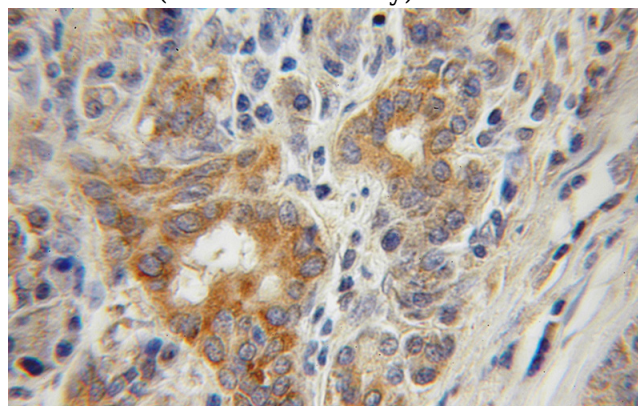
WB: 1:200-1:1000

IHC: 1:20-1:200

## Validations



human kidney tissue were subjected to SDS PAGE followed by western blot with Catalog No:109721(CTDSP2 antibody) at dilution of 1:400



Immunohistochemical of paraffin-embedded human pancreas cancer using Catalog No:109721(CTDSP2 antibody) at dilution of 1:50 (under 10x lens)