

# Cysteine dioxygenase type 1 antibody



Catalog Number: 109717

## Product name

Cysteine dioxygenase type 1 antibody

WB: 1:200-1:2000

IP: 1:200-1:2000

## Specificity

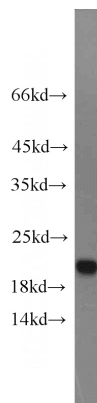
Human, Mouse, Rat; other species not tested.

IHC: 1:20-1:200

## Antibody description

Cysteine dioxygenase type 1 Rabbit Polyclonal antibody. Positive WB detected in mouse liver tissue, rat liver tissue. Positive IP detected in mouse liver tissue. Positive IHC detected in human pancreas cancer tissue, human liver cancer tissue, human placenta tissue. Observed molecular weight by Western-blot: 23 kDa

## Validations



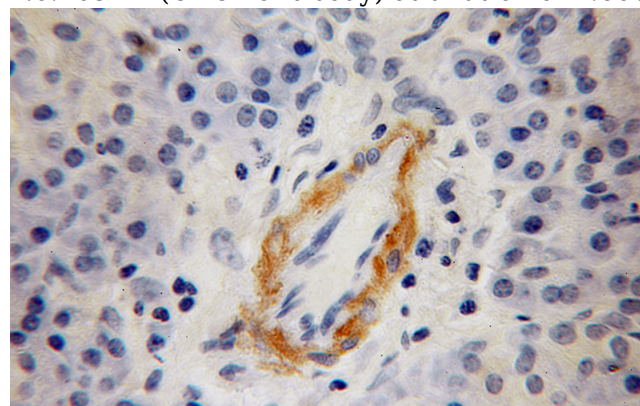
## Preparation

This antibody was obtained by immunization of Cysteine dioxygenase type 1 recombinant protein (Accession Number: NM\_001801). Purification method: Antigen affinity purified.

mouse liver tissue were subjected to SDS PAGE followed by western blot with Catalog No:109717(CDO1 antibody) at dilution of 1:600

## Formulation

PBS with 0.02% sodium azide and 50% glycerol pH 7.3.



## Storage

Store at -20°C. DO NOT ALIQUOT

Immunohistochemical of paraffin-embedded human pancreas cancer using Catalog No:109717(CDO1 antibody) at dilution of 1:100 (under 10x lens)

## Clonality

Polyclonal

## Ig Type

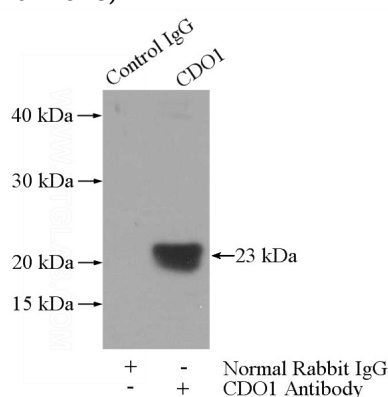
Rabbit IgG

## Applications

ELISA, WB, IHC, IP

## Dilutions

Recommended Dilution:



# Cysteine dioxygenase type 1 antibody



Catalog Number: 109717

---

IP Result of anti-CDO1 (IP:Catalog No:109717,

3ug; Detection:Catalog No:109717 1:600) with mouse liver tissue lysate 4000ug.