

# CYPC antibody

Catalog Number: 109713

## Product name

CYPC antibody

## Specificity

Human, Mouse, Rat; other species not tested.

## Antibody description

CYPC Rabbit Polyclonal antibody. Positive IHC detected in human heart tissue, mouse kidney tissue. Positive WB detected in HEK-293 cells, human heart tissue, mouse heart tissue. Observed molecular weight by Western-blot: 23 kDa

## Preparation

This antibody was obtained by immunization of CYPC recombinant protein (Accession Number: NM\_000943). Purification method: Antigen affinity purified.

## Formulation

PBS with 0.1% sodium azide and 50% glycerol pH 7.3.

## Storage

Store at -20°C. DO NOT ALIQUOT

## Clonality

Polyclonal

## Ig Type

Rabbit IgG

## Applications

ELISA, WB, IHC

## Dilutions

Recommended Dilution:

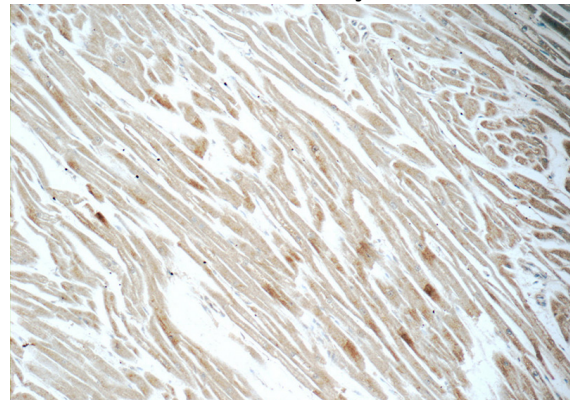
WB: 1:500-1:5000

IHC: 1:20-1:200

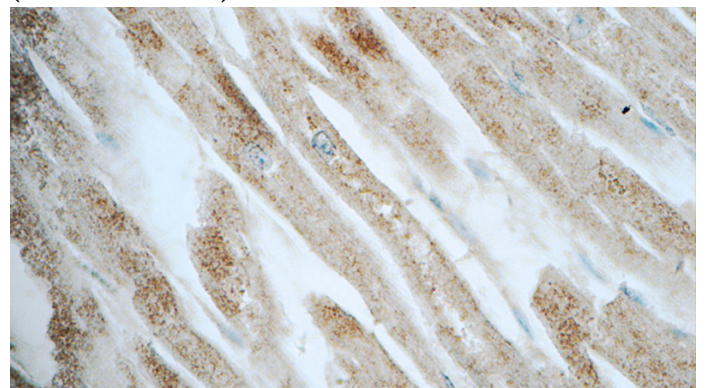
## Validations



HEK-293 cells were subjected to SDS PAGE followed by western blot with Catalog No:109713(CYPC antibody) at dilution of 1:1000



Immunohistochemistry of paraffin-embedded human heart tissue slide using Catalog No:109713(CYPC Antibody) at dilution of 1:50 (under 10x lens)



Immunohistochemistry of paraffin-embedded human heart tissue slide using Catalog No:109713(CYPC Antibody) at dilution of 1:50

# CYPC antibody



Catalog Number: 109713

---

(under 40x lens)