

# CYP4F11-Specific antibody



Catalog Number: 109706

## Product name

CYP4F11-Specific antibody

## Specificity

Human, Mouse; other species not tested.

## Antibody description

CYP4F11-Specific Rabbit Polyclonal antibody. Positive IF detected in HepG2 cells. Positive IHC detected in human hepat°Cirrhosis tissue. Positive WB detected in mouse skeletal muscle tissue. Observed molecular weight by Western-blot: 60kd

## Preparation

This antibody was obtained by immunization of Peptide (Accession Number: NM\_001128932). Purification method: Antigen affinity purified.

## Formulation

PBS with 0.02% sodium azide and 50% glycerol pH 7.3.

## Storage

Store at -20°C. DO NOT ALIQUOT

## Clonality

Polyclonal

## Ig Type

Rabbit IgG

## Applications

ELISA, WB, IHC, IF

## Dilutions

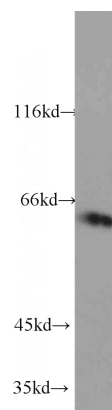
Recommended Dilution:

WB: 1:200-1:2000

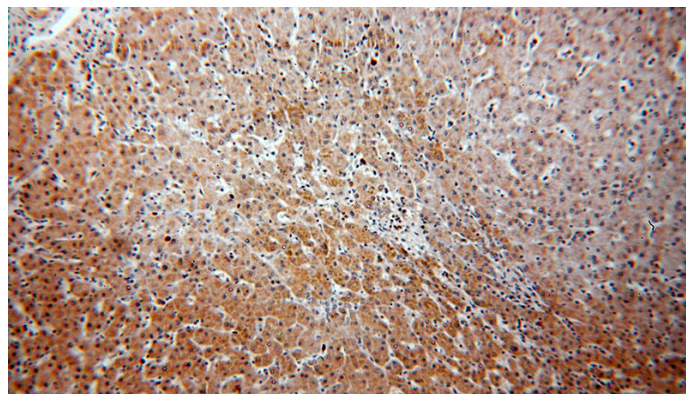
IHC: 1:20-1:200

IF: 1:10-1:100

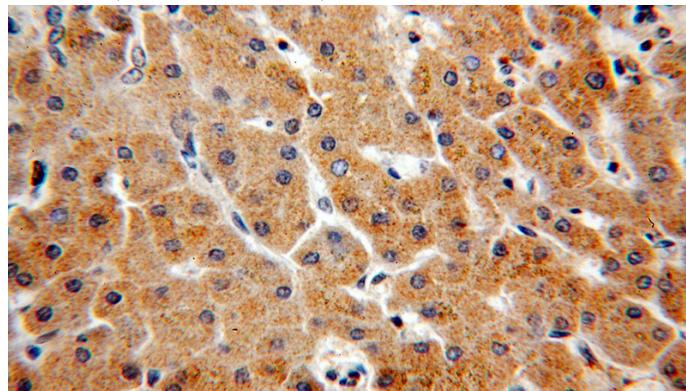
## Validations



mouse skeletal muscle tissue were subjected to SDS PAGE followed by western blot with Catalog No:109706(CYP4F11-Specific antibody) at dilution of 1:600



Immunohistochemical of paraffin-embedded human hepatocirrhosis using Catalog No:109706(CYP4F11-Specific antibody) at dilution of 1:50 (under 10x lens)



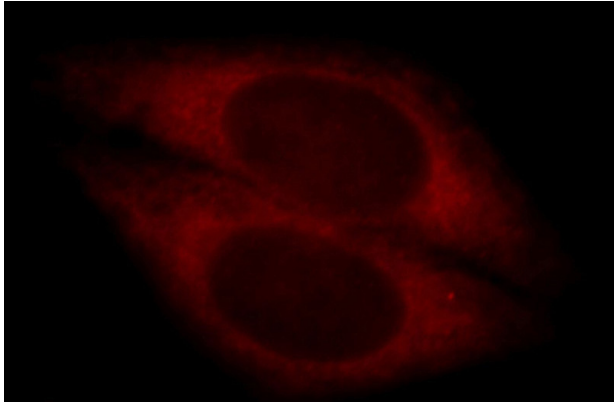
Immunohistochemical of paraffin-embedded human hepatocirrhosis using Catalog

# CYP4F11-Specific antibody

Catalog Number: 109706

---

No:109706(CYP4F11-Specific antibody) at dilution of 1:50 (under 40x lens)



Immunofluorescent analysis of HepG2 cells, using CYP4F11 antibody Catalog No:109706 at 1:25 dilution and Rhodamine-labeled goat anti-rabbit IgG (red).