

# CYP2E1-Specific antibody



Catalog Number: 109694

## Product name

CYP2E1-Specific antibody

## Specificity

Human, Mouse, Rat; other species not tested.

## Antibody description

CYP2E1-Specific Rabbit Polyclonal antibody. Positive IF detected in Hela cells. Positive WB detected in Jurkat cells, mouse liver tissue. Observed molecular weight by Western-blot: 50-57kd, 38kd

## Preparation

This antibody was obtained by immunization of Peptide (Accession Number: NM\_000773). Purification method: Antigen affinity purified.

## Formulation

PBS with 0.02% sodium azide and 50% glycerol pH 7.3.

## Storage

Store at -20°C. DO NOT ALIQUOT

## Clonality

Polyclonal

## Ig Type

Rabbit IgG

## Applications

ELISA, IF, WB

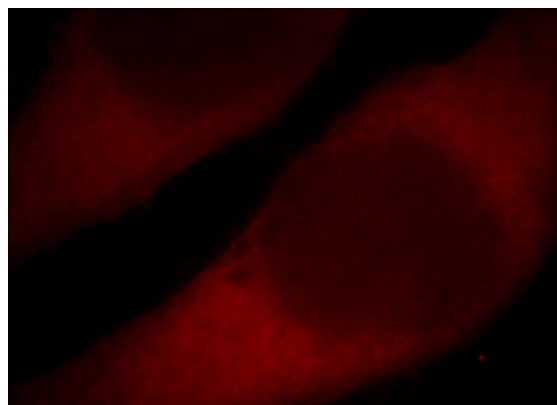
## Dilutions

Recommended Dilution:

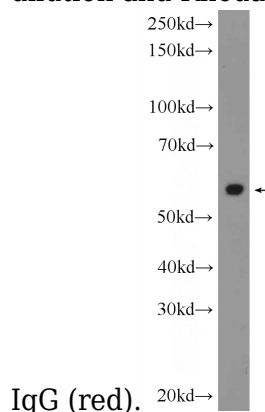
WB: 1:200-1:2000

IF: 1:10-1:100

## Validations



Immunofluorescent analysis of Hela cells, using CYP2E1 antibody Catalog No:109694 at 1:25 dilution and Rhodamine-labeled goat anti-rabbit



Jurkat cells were subjected to SDS PAGE followed by western blot with Catalog No:109694(CYP2E1-Specific Antibody) at dilution of 1:1000