

CYP2D6 antibody

Catalog Number: 109693

Product name

CYP2D6 antibody

Specificity

Human, Mouse, Rat; other species not tested.

Antibody description

CYP2D6 Rabbit Polyclonal antibody. Positive IHC detected in human kidney tissue, human liver tissue. Positive WB detected in mouse liver tissue. Observed molecular weight by Western-blot: 50 kDa, 65 kDa

Preparation

This antibody was obtained by immunization of CYP2D6 recombinant protein (Accession Number: NM_000106). Purification method: Antigen affinity purified.

Formulation

PBS with 0.1% sodium azide and 50% glycerol pH 7.3.

Storage

Store at -20°C. DO NOT ALIQUOT

Clonality

Polyclonal

Ig Type

Rabbit IgG

Applications

ELISA, IHC, WB

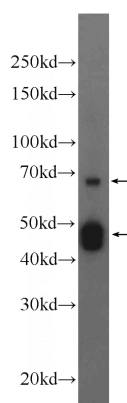
Dilutions

Recommended Dilution:

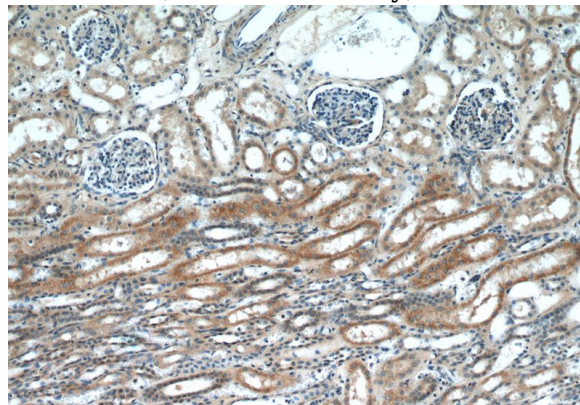
WB: 1:200-1:1000

IHC: 1:20-1:200

Validations



mouse liver tissue were subjected to SDS PAGE followed by western blot with Catalog No:109693(CYP2D6 Antibody) at dilution of 1:300



Immunohistochemical of paraffin-embedded human kidney using Catalog No:109693(CYP2D6 antibody) at dilution of 1:50 (under 10x lens)