

# CYP27A1 antibody



Catalog Number: 109690

## Product name

CYP27A1 antibody

## Specificity

Human, Mouse, Rat; other species not tested.

## Antibody description

CYP27A1 Rabbit Polyclonal antibody. Positive IHC detected in human liver tissue. Positive WB detected in mouse liver tissue, NIH/3T3 cells. Observed molecular weight by Western-blot: 60-65kd

## Preparation

This antibody was obtained by immunization of CYP27A1 recombinant protein (Accession Number: NM\_000784). Purification method: Antigen affinity purified.

## Formulation

PBS with 0.02% sodium azide and 50% glycerol pH 7.3.

## Storage

Store at -20°C. DO NOT ALIQUOT

## Clonality

Polyclonal

## Ig Type

Rabbit IgG

## Applications

ELISA, IHC, WB

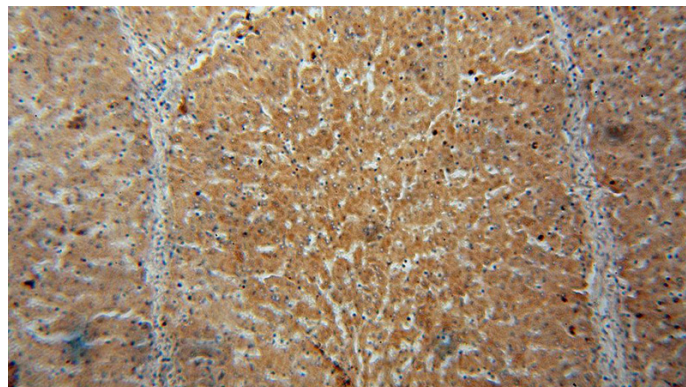
## Dilutions

Recommended Dilution:

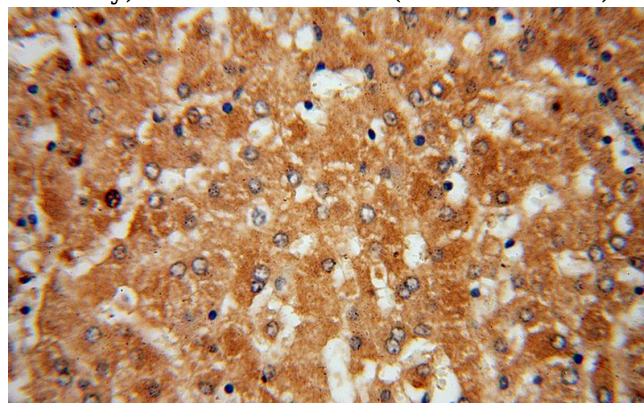
WB: 1:200-1:2000

IHC: 1:20-1:200

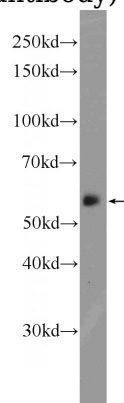
## Validations



Immunohistochemical of paraffin-embedded human liver using Catalog No:109690(CYP27A1 antibody) at dilution of 1:50 (under 10x lens)



Immunohistochemical of paraffin-embedded human liver using Catalog No:109690(CYP27A1 antibody) at dilution of 1:50 (under 40x lens)



mouse liver tissue were subjected to SDS PAGE followed by western blot with Catalog No:109690(CYP27A1 Antibody) at dilution of 1:600