

CYP27A1 antibody



Catalog Number: 109689

Product name

CYP27A1 antibody

WB: 1:500-1:5000

IHC: 1:20-1:200

Immunogen

[Human CYP27A1 Recombinant protein \(His tag\)](#)

Specificity

Human; other species not tested.

Antibody description

CYP27A1 Rabbit Polyclonal antibody. Positive WB detected in L02 cells, HepG2 cells. Positive IHC detected in human kidney tissue. Observed molecular weight by Western-blot: 60 kDa

Preparation

This antibody was obtained by immunization of CYP27A1 recombinant protein (Accession Number: NM_000784). Purification method: Antigen affinity purified.

Formulation

PBS with 0.02% sodium azide and 50% glycerol pH 7.3.

Storage

Store at -20°C. DO NOT ALIQUOT

Clonality

Polyclonal

Ig Type

Rabbit IgG

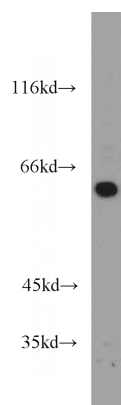
Applications

ELISA, WB, IHC

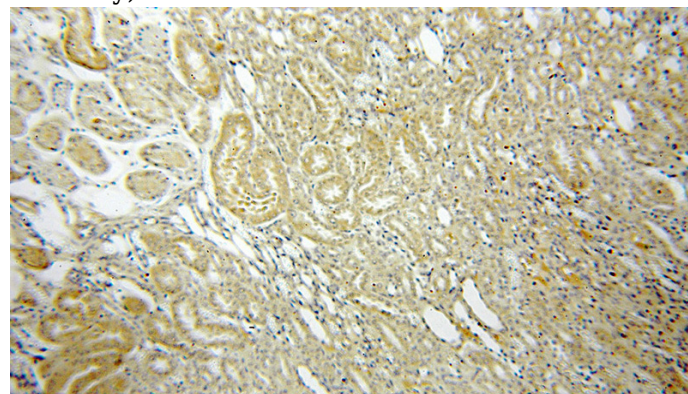
Dilutions

Recommended Dilution:

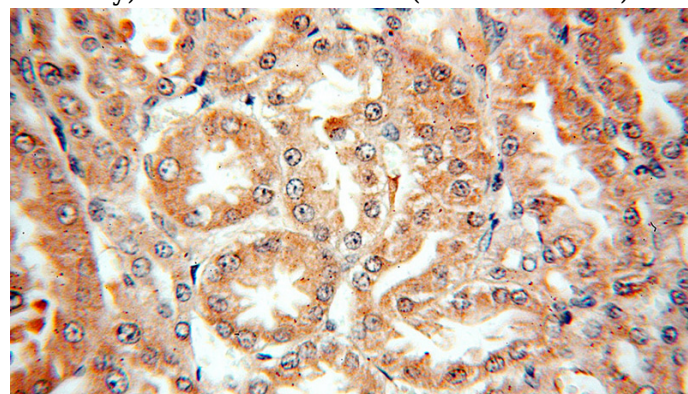
Validations



L02 cells were subjected to SDS PAGE followed by western blot with Catalog No:109689(CYP27A1 antibody) at dilution of 1:1000



Immunohistochemical of paraffin-embedded human kidney using Catalog No:109689(CYP27A1 antibody) at dilution of 1:100 (under 10x lens)



Immunohistochemical of paraffin-embedded human kidney using Catalog No:109689(CYP27A1

CYP27A1 antibody



Catalog Number: 109689

antibody) at dilution of 1:100 (under 40x lens)