

CYP17A1 antibody



Catalog Number: 109681

Product name

CYP17A1 antibody

WB: 1:200-1:2000

IHC: 1:20-1:200

Specificity

Human; other species not tested.

IF: 1:20-1:200

Antibody description

CYP17A1 Rabbit Polyclonal antibody. Positive WB detected in HeLa cells, A549 cells, HepG2 cells, Jurkat cells, mouse brain tissue, rat brain tissue. Positive IF detected in HepG2 cells. Positive IHC detected in human prostate cancer tissue. Observed molecular weight by Western-blot: 48-51 kDa

Preparation

This antibody was obtained by immunization of CYP17A1 recombinant protein (Accession Number: NM_000102). Purification method: Antigen affinity purified.

Formulation

PBS with 0.02% sodium azide and 50% glycerol pH 7.3.

Storage

Store at -20°C. DO NOT ALIQUOT

Clonality

Polyclonal

Ig Type

Rabbit IgG

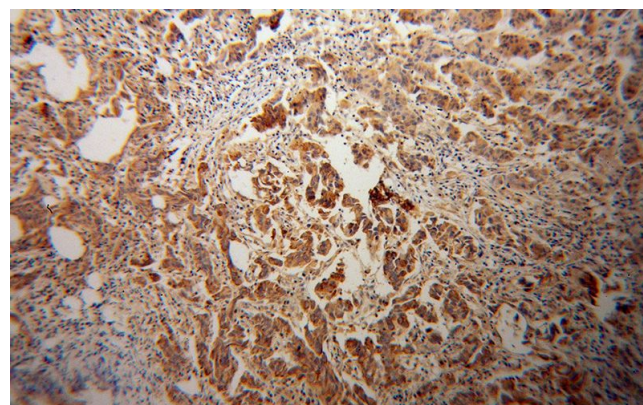
Applications

ELISA, IHC, IF, WB

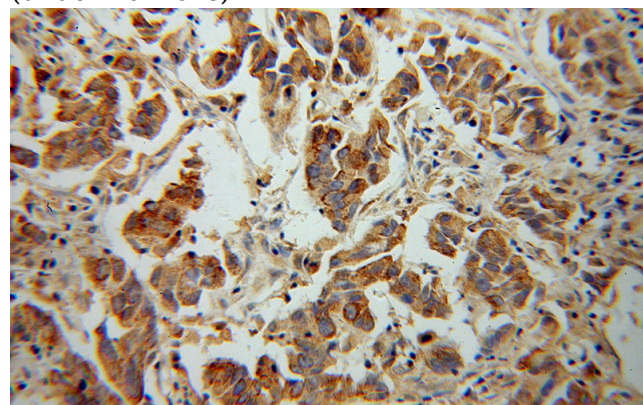
Dilutions

Recommended Dilution:

Validations



Immunohistochemical of paraffin-embedded human prostate cancer using Catalog No:109681(CYP17A1 antibody) at dilution of 1:100 (under 10x lens)

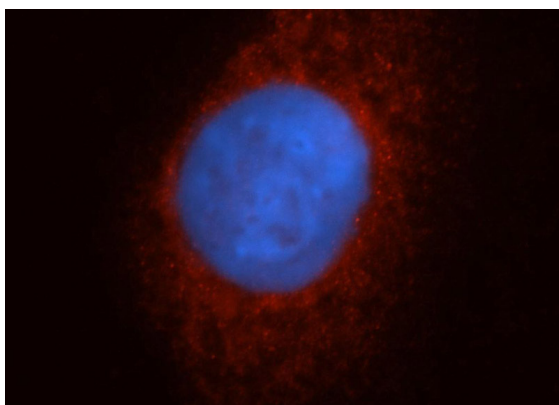


Immunohistochemical of paraffin-embedded human prostate cancer using Catalog No:109681(CYP17A1 antibody) at dilution of 1:100 (under 40x lens)

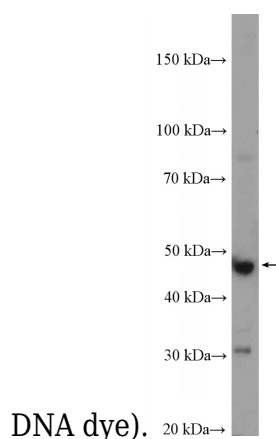
CYP17A1 antibody



Catalog Number: 109681



Immunofluorescent analysis of HepG2 cells, using CYP17A1 antibody Catalog No:109681 at 1:50 dilution and Rhodamine-labeled goat anti-rabbit IgG (red). Blue pseudocolor = DAPI (fluorescent



HeLa cells were subjected to SDS PAGE followed by western blot with Catalog No:109681(CYP17A1 Antibody) at dilution of 1:600