

Cyclophilin B antibody



Catalog Number: 109674

Product name

Cyclophilin B antibody

Specificity

Human, Mouse; other species not tested.

Antibody description

Cyclophilin B Rabbit Polyclonal antibody. Positive IHC detected in human lymphoma tissue, human gliomas tissue, human pancreas cancer tissue. Positive IF detected in HeLa cells. Positive WB detected in HeLa cells, HepG2 cells, human skin tissue, mouse liver tissue, NIH/3T3 cells, Raji cells, U-937 cells. Observed molecular weight by Western-blot: 24 kDa

Preparation

This antibody was obtained by immunization of Cyclophilin B recombinant protein (Accession Number: NM_000942). Purification method: Antigen affinity purified.

Formulation

PBS with 0.1% sodium azide and 50% glycerol pH 7.3.

Storage

Store at -20°C. DO NOT ALIQUOT

Clonality

Polyclonal

Ig Type

Rabbit IgG

Applications

ELISA, IHC, WB, IF

Dilutions

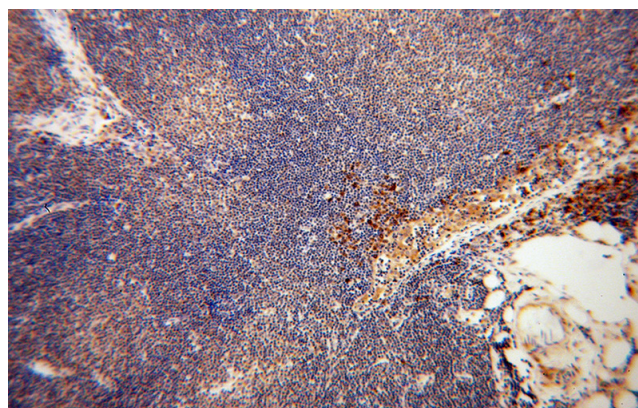
Recommended Dilution:

WB: 1:500-1:5000

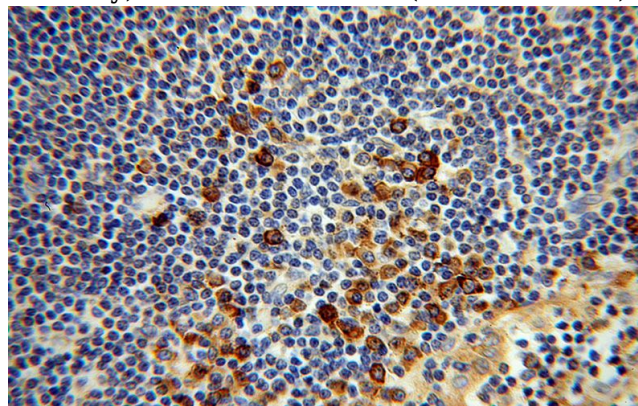
IHC: 1:20-1:200

IF: 1:20-1:200

Validations



Immunohistochemical of paraffin-embedded human lymphoma using Catalog No:109674(PPIB antibody) at dilution of 1:100 (under 10x lens)

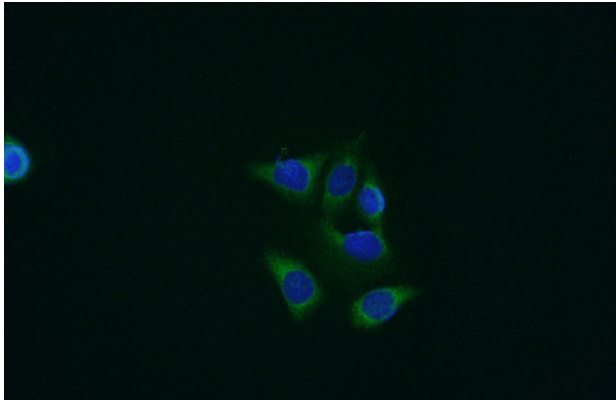


Immunohistochemical of paraffin-embedded human lymphoma using Catalog No:109674(PPIB antibody) at dilution of 1:100 (under 40x lens)

Cyclophilin B antibody



Catalog Number: 109674



Immunofluorescent analysis of HeLa cells using Catalog No:109674(PPIB Antibody) at dilution of 1:50 and Alexa Fluor 488-conjugated AffiniPure Goat Anti-Rabbit IgG(H+L)