

Cyclophilin A antibody



Catalog Number: 109673

Product name

Cyclophilin A antibody

Specificity

Human, Mouse, Rat; other species not tested.

Antibody description

Cyclophilin A Rabbit Polyclonal antibody. Positive FC detected in HeLa cells. Positive IF detected in HeLa cells. Positive IHC detected in human colon cancer tissue, human brain tissue, human kidney tissue, human lung tissue, human ovary tissue, human placenta tissue, human skin tissue, human spleen tissue, human testis tissue, human tonsillitis tissue. Positive WB detected in K-562 cells, C6 cells, HeLa cells, HepG2 cells, NIH/3T3 cells, Raji cells. Observed molecular weight by Western-blot: 18kd

Preparation

This antibody was obtained by immunization of Cyclophilin A recombinant protein (Accession Number: NM_021130). Purification method: Antigen affinity purified.

Formulation

PBS with 0.1% sodium azide and 50% glycerol pH 7.3.

Storage

Store at -20°C. DO NOT ALIQUOT

Clonality

Polyclonal

Ig Type

Rabbit IgG

Applications

ELISA, WB, IHC, IF, FC

Dilutions

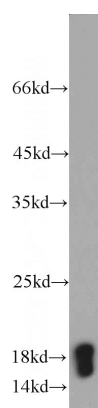
Recommended Dilution:

WB: 1:500-1:5000

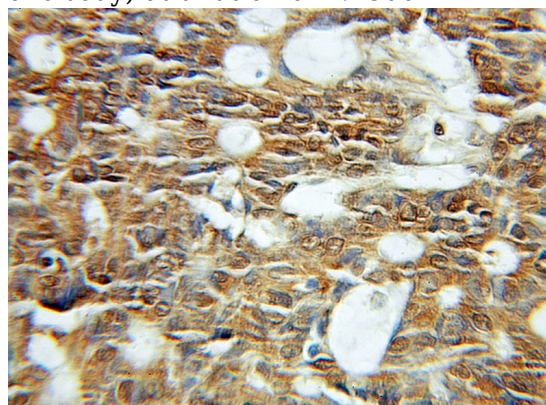
IHC: 1:20-1:200

IF: 1:10-1:100

Validations



K-562 cells were subjected to SDS PAGE followed by western blot with Catalog No:109673(CYPA antibody) at dilution of 1:1500

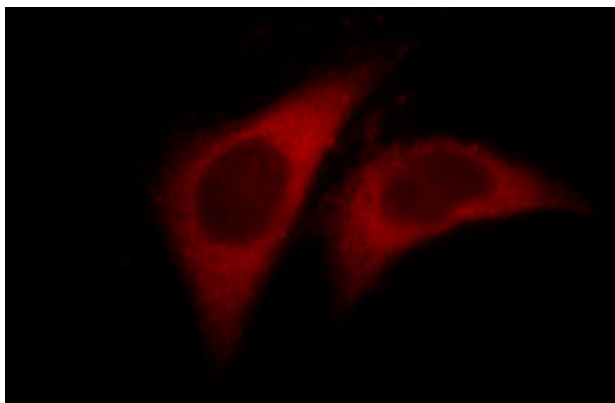


Immunohistochemical of paraffin-embedded human colon cancer using Catalog No:109673(CYPA antibody) at dilution of 1:200 (under 10x lens)

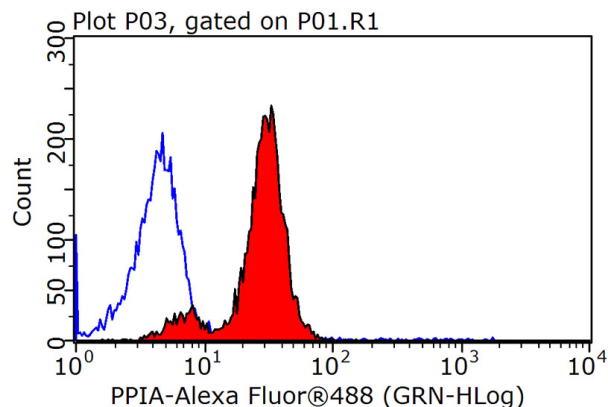
Cyclophilin A antibody



Catalog Number: 109673



Immunofluorescent analysis of HepG2 cells, using PPIA antibody Catalog No:109673 at 1:25 dilution and Rhodamine-labeled goat anti-rabbit IgG (red).



1X10⁶ HeLa cells were stained with 0.2ug CYP A antibody (Catalog No:109673, red) and control antibody (blue). Fixed with 90% MeOH blocked with 3% BSA (30 min). Alexa Fluor 488-conjugated AffiniPure Goat Anti-Rabbit IgG(H+L) with dilution 1:1000.