

# Cyclon/CCDC86 antibody



Catalog Number: 109671

## Product name

Cyclon/CCDC86 antibody

## Specificity

Human, Mouse, Rat; other species not tested.

## Antibody description

Cyclon/CCDC86 Rabbit Polyclonal antibody. Positive IF detected in HepG2 cells. Positive WB detected in mouse stomach tissue, HepG2 cells, human heart tissue, human liver tissue, human stomach tissue. Observed molecular weight by Western-blot: 65 kDa

## Preparation

This antibody was obtained by immunization of Cyclon/CCDC86 recombinant protein (Accession Number: NM\_024098). Purification method: Antigen affinity purified.

## Formulation

PBS with 0.02% sodium azide and 50% glycerol pH 7.3.

## Storage

Store at -20°C. DO NOT ALIQUOT

## Clonality

Polyclonal

## Ig Type

Rabbit IgG

## Applications

ELISA, WB, IF

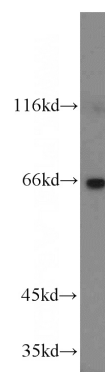
## Dilutions

Recommended Dilution:

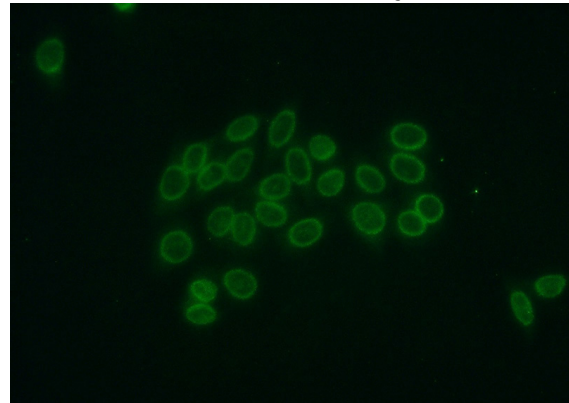
WB: 1:200-1:2000

IF: 1:20-1:200

## Validations



mouse stomach tissue were subjected to SDS PAGE followed by western blot with Catalog No:109671(CCDC86 antibody) at dilution of 1:500



Immunofluorescent analysis of HepG2 cells using Catalog No:109671(CCDC86 Antibody) at dilution of 1:50 and Alexa Fluor 488-conjugated AffiniPure Goat Anti-Rabbit IgG(H+L)