

Cyclin A2 antibody



Catalog Number: 109661

Product name

Cyclin A2 antibody

IP: 1:200-1:2000

IF: 1:50-1:500

Specificity

Human, Mouse; other species not tested.

Antibody description

Cyclin A2 Rabbit Polyclonal antibody. Positive WB detected in HL-60 cells, K-562 cells, MCF7 cells, MCF-7 cells, NIH/3T3 cells, U-937 cells. Positive IP detected in HL-60 cells. Positive IF detected in HeLa cells, MCF-7 cells. Observed molecular weight by Western-blot: 56 kDa

Preparation

This antibody was obtained by immunization of Cyclin A2 recombinant protein (Accession Number: NM_001237). Purification method: Antigen affinity purified.

Formulation

PBS with 0.02% sodium azide and 50% glycerol pH 7.3.

Storage

Store at -20°C. DO NOT ALIQUOT

Clonality

Polyclonal

Ig Type

Rabbit IgG

Applications

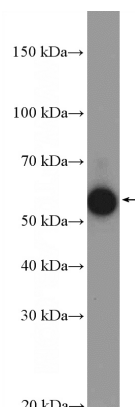
ELISA, IP, WB, IF

Dilutions

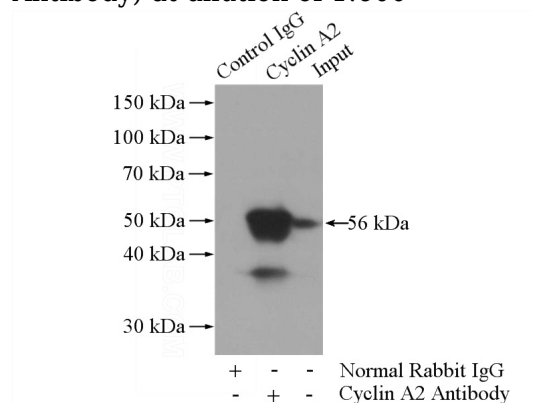
Recommended Dilution:

WB: 1:200-1:2000

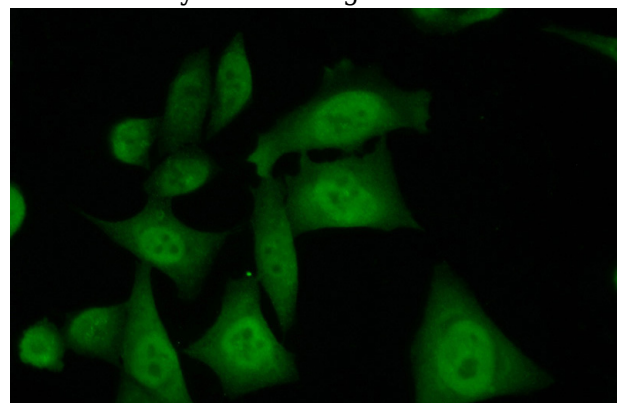
Validations



HL-60 cells were subjected to SDS PAGE followed by western blot with Catalog No:109661(Cyclin A2 Antibody) at dilution of 1:600



IP Result of anti-Cyclin A2 (IP:Catalog No:109661, 3ug; Detection:Catalog No:109661 1:500) with HL-60 cells lysate 4000ug.



Immunofluorescent analysis of (10% Formaldehyde) fixed HeLa cells using Catalog

Cyclin A2 antibody



Catalog Number: 109661

No:109661(Cyclin A2 Antibody) at dilution of 1:50 and Alexa Fluor 488-conjugated AffiniPure Goat Anti-Rabbit IgG(H+L)