

CWC25 antibody

Catalog Number: 109631

Product name

CWC25 antibody

IHC: 1:20-1:200

IF: 1:10-1:100

Specificity

Human, Mouse; other species not tested.

Antibody description

CWC25 Rabbit Polyclonal antibody. Positive IHC detected in human testis tissue, human cervical cancer tissue. Positive IF detected in HepG2 cells. Positive WB detected in HeLa cells. Observed molecular weight by Western-blot: 50 kDa

Preparation

This antibody was obtained by immunization of CWC25 recombinant protein (Accession Number: NM_017748). Purification method: Antigen affinity purified.

Formulation

PBS with 0.1% sodium azide and 50% glycerol pH 7.3.

Storage

Store at -20°C. DO NOT ALIQUOT

Clonality

Polyclonal

Ig Type

Rabbit IgG

Applications

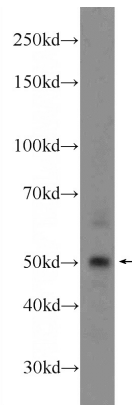
ELISA, WB, IHC, IF

Dilutions

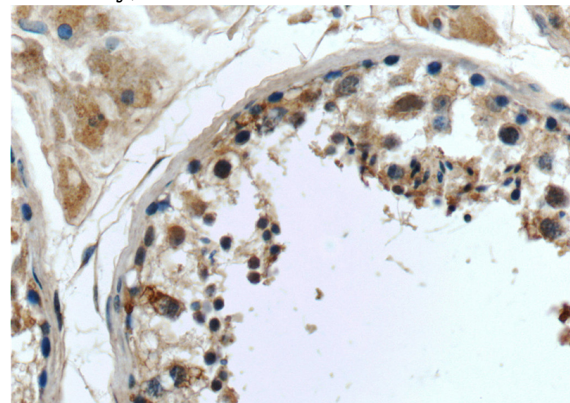
Recommended Dilution:

WB: 1:500-1:5000

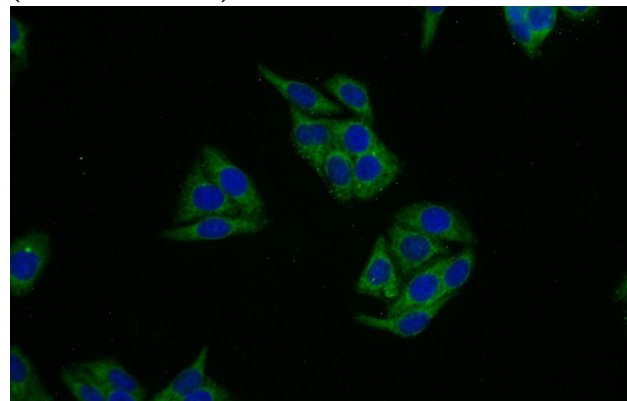
Validations



HeLa cells were subjected to SDS PAGE followed by western blot with Catalog No:109631(CCDC49 Antibody) at dilution of 1:1000



Immunohistochemistry of paraffin-embedded human testis tissue slide using Catalog No:109631(CCDC49 Antibody) at dilution of 1:50 (under 40x lens)



Immunofluorescent analysis of HepG2 cells using

CWC25 antibody



Catalog Number: 109631

Catalog No:109631(CCDC49 Antibody) at dilution of 1:25 and Alexa Fluor 488-conjugated AffiniPure Goat Anti-Rabbit IgG(H+L)