

CWC15 antibody



Catalog Number: 109630

Product name

CWC15 antibody

Specificity

Human, Mouse; other species not tested.

Antibody description

CWC15 Rabbit Polyclonal antibody. Positive IHC detected in human stomach tissue, human breast cancer tissue. Positive IP detected in HeLa cells. Positive WB detected in mouse liver tissue, HeLa cells, HepG2 cells, Jurkat cells, mouse heart tissue, mouse testis tissue, PC-3 cells, SW 1990 cells. Observed molecular weight by Western-blot: 27-35 kDa

Preparation

This antibody was obtained by immunization of CWC15 recombinant protein (Accession Number: NM_016403). Purification method: Antigen affinity purified.

Formulation

PBS with 0.1% sodium azide and 50% glycerol pH 7.3.

Storage

Store at -20°C. DO NOT ALIQUOT

Clonality

Polyclonal

Ig Type

Rabbit IgG

Applications

ELISA, WB, IHC, IP

Dilutions

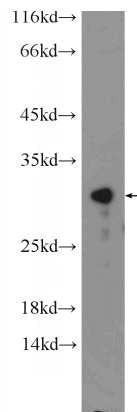
Recommended Dilution:

WB: 1:200-1:2000

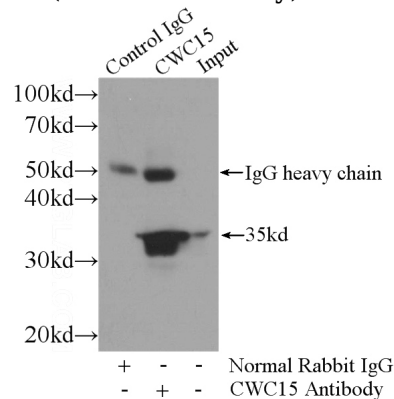
IP: 1:200-1:2000

IHC: 1:20-1:200

Validations



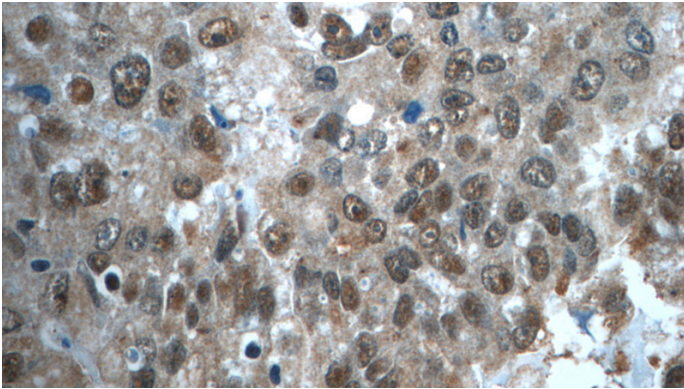
mouse liver tissue were subjected to SDS PAGE followed by western blot with Catalog No:109630(CWC15 Antibody) at dilution of 1:600



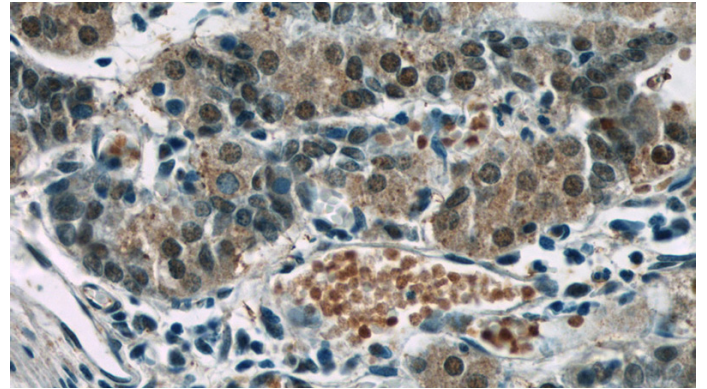
IP Result of anti-CWC15 (IP:Catalog No:109630, 3ug; Detection:Catalog No:109630 1:600) with HeLa cells lysate 2800ug.

CWC15 antibody

Catalog Number: 109630



Immunohistochemistry of paraffin-embedded human breast cancer tissue slide using Catalog No:109630(CWC15 Antibody) at dilution of 1:50 (under 40x lens)



Immunohistochemistry of paraffin-embedded human stomach tissue slide using Catalog No:109630(CWC15 Antibody) at dilution of 1:50 (under 40x lens)