

**Product name**

Polyclonal

CRYGN antibody

**Ig Type****Specificity**

Rabbit IgG

Human, Mouse; other species not tested.

**Applications****Antibody description**

ELISA, WB

CRYGN Rabbit Polyclonal antibody. Positive WB detected in mouse eye tissue. Observed molecular weight by Western-blot: 17,25 kDa

**Dilutions**

Recommended Dilution:

**Preparation**

WB: 1:200-1:1000

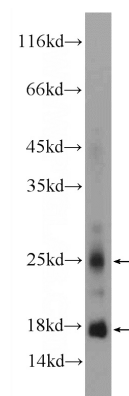
This antibody was obtained by immunization of CRYGN recombinant protein (Accession Number: NM\_144727). Purification method: Antigen affinity purified.

**Validations****Formulation**

PBS with 0.1% sodium azide and 50% glycerol pH 7.3.

**Storage**

Store at -20°C. DO NOT ALIQUOT

**Clonality**

mouse eye tissue were subjected to SDS PAGE followed by western blot with Catalog No:109587(CRYGN Antibody) at dilution of 1:300