

# CROT antibody

Catalog Number: 109577

## Product name

CROT antibody

## Specificity

Human, Mouse, Rat; other species not tested.

## Antibody description

CROT Rabbit Polyclonal antibody. Positive WB detected in mouse kidney tissue. Positive IHC detected in human liver cancer tissue. Positive FC detected in HepG2 cells. Observed molecular weight by Western-blot: 65-70kd

## Preparation

This antibody was obtained by immunization of CROT recombinant protein (Accession Number: NM\_021151). Purification method: Antigen affinity purified.

## Formulation

PBS with 0.02% sodium azide and 50% glycerol pH 7.3.

## Storage

Store at -20°C. DO NOT ALIQUOT

## Clonality

Polyclonal

## Ig Type

Rabbit IgG

## Applications

ELISA, WB, IHC, FC

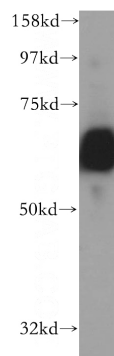
## Dilutions

Recommended Dilution:

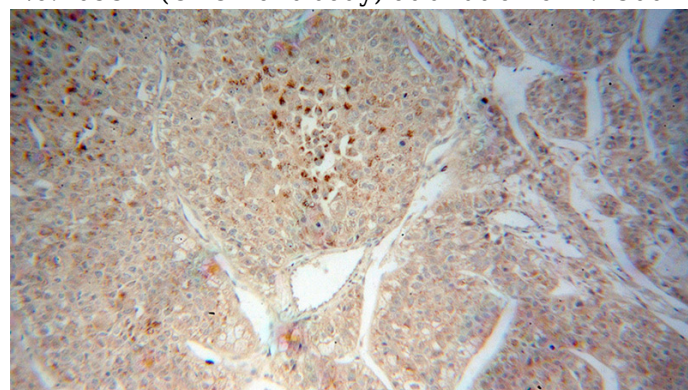
WB: 1:500-1:5000

IHC: 1:20-1:200

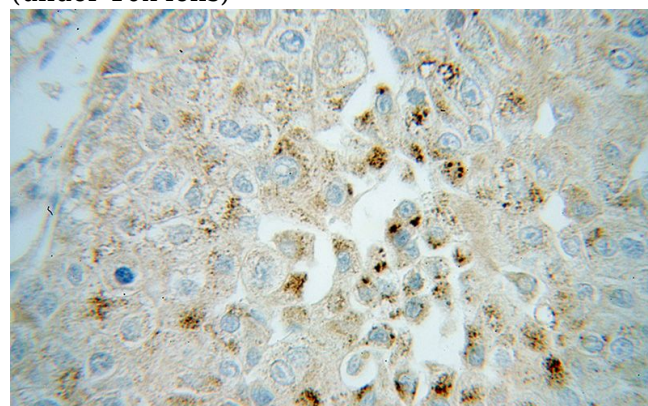
## Validations



mouse kidney tissue were subjected to SDS PAGE followed by western blot with Catalog No:109577(CROT antibody) at dilution of 1:1500



Immunohistochemical of paraffin-embedded human liver cancer using Catalog No:109577(CROT antibody) at dilution of 1:100 (under 10x lens)



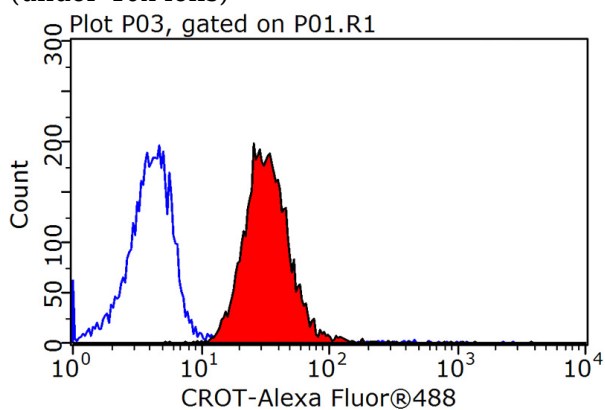
Immunohistochemical of paraffin-embedded human liver cancer using Catalog No:109577(CROT antibody) at dilution of 1:100

# CROT antibody



Catalog Number: 109577

(under 40x lens)



1X10<sup>6</sup> HepG2 cells were stained with 0.2ug CROT antibody (Catalog No:109577, red) and control antibody (blue). Fixed with 90% MeOH blocked with 3% BSA (30 min). Alexa Fluor 488-conjugated AffiniPure Goat Anti-Rabbit IgG(H+L) with dilution 1:1500.