

CRMP4 antibody



Catalog Number: 109573

Product name

CRMP4 antibody

WB: 1:500-1:5000

IP: 1:200-1:2000

Specificity

Human, Mouse, Rat; other species not tested.

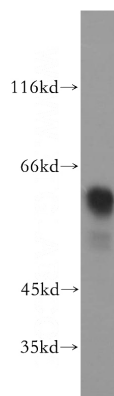
IHC: 1:20-1:200

IF: 1:10-1:100

Antibody description

CRMP4 Rabbit Polyclonal antibody. Positive IP detected in SH-SY5Y cells. Positive WB detected in SH-SY5Y cells, Jurkat cells, mouse cerebellum tissue, mouse thymus tissue. Positive IF detected in HepG2 cells. Positive IHC detected in human kidney tissue. Observed molecular weight by Western-blot: 60-70 kDa

Validations



Preparation

This antibody was obtained by immunization of CRMP4 recombinant protein (Accession Number: NM_001387). Purification method: Antigen affinity purified.

SH-SY5Y cells were subjected to SDS PAGE followed by western blot with Catalog No:109573(DPYSL3 antibody) at dilution of 1:800

Formulation

PBS with 0.02% sodium azide and 50% glycerol pH 7.3.

Storage

Store at -20°C. DO NOT ALIQUOT

Clonality

Polyclonal

Ig Type

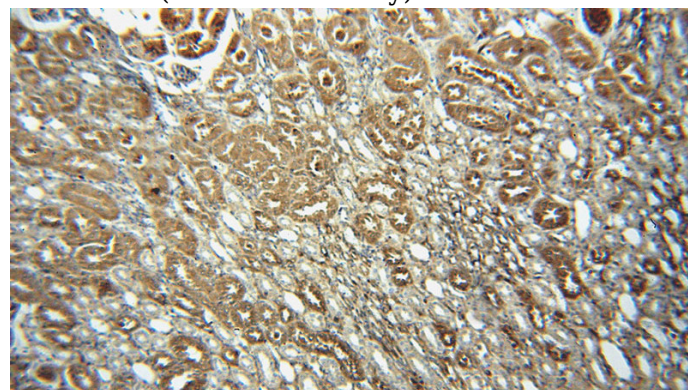
Rabbit IgG

Applications

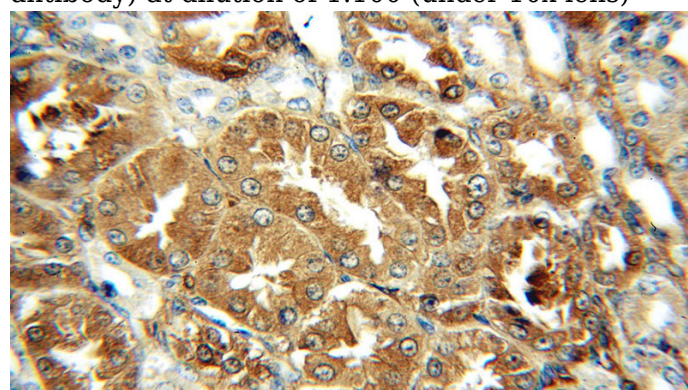
ELISA, WB, IHC, IF, IP

Dilutions

Recommended Dilution:



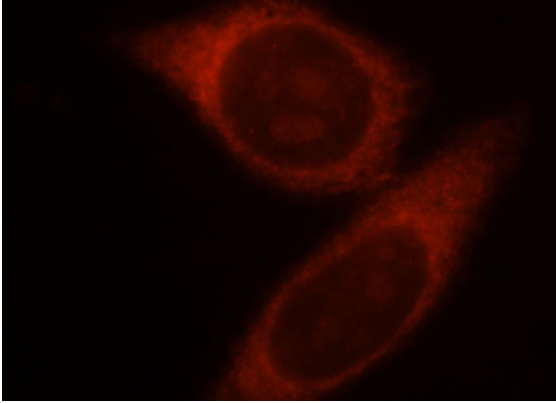
Immunohistochemical of paraffin-embedded human kidney using Catalog No:109573(DPYSL3 antibody) at dilution of 1:100 (under 10x lens)



CRMP4 antibody

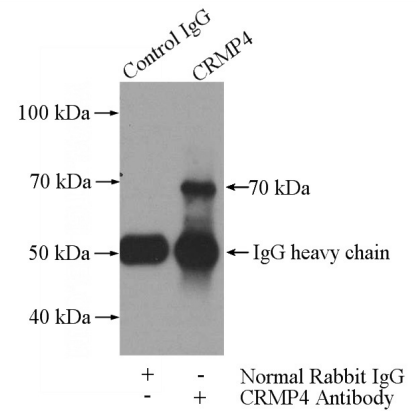
Catalog Number: 109573

Immunohistochemical of paraffin-embedded human kidney using Catalog No:109573(DPYSL3 antibody) at dilution of 1:100 (under 40x lens)



Immunofluorescent analysis of HepG2 cells, using DPYSL3 antibody Catalog No:109573 at 1:25

dilution and Rhodamine-labeled goat anti-rabbit



IgG (red).

IP Result of anti-DPYSL3 (IP:Catalog No:109573, 3ug; Detection:Catalog No:109573 1:700) with SH-SY5Y cells lysate 3000ug.