

CRIP2 antibody



Catalog Number: 109560

Product name

CRIP2 antibody

Specificity

Human, Mouse, Rat; other species not tested.

Antibody description

CRIP2 Rabbit Polyclonal antibody. Positive IF detected in HeLa cells. Positive WB detected in mouse heart tissue, HeLa cells, MCF7 cells, mouse brain tissue, mouse lung tissue. Observed molecular weight by Western-blot: 23-29 kDa

Preparation

This antibody was obtained by immunization of CRIP2 recombinant protein (Accession Number: NM_001312). Purification method: Antigen affinity purified.

Formulation

PBS with 0.02% sodium azide and 50% glycerol pH 7.3.

Storage

Store at -20°C. DO NOT ALIQUOT

Clonality

Polyclonal

Ig Type

Rabbit IgG

Applications

ELISA, IF, WB

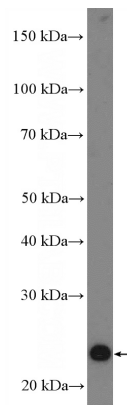
Dilutions

Recommended Dilution:

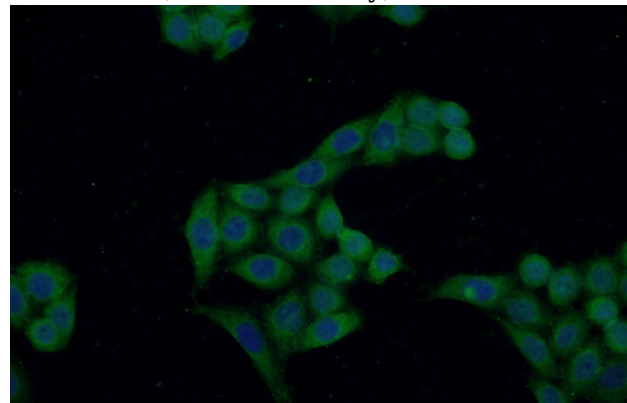
WB: 1:500-1:5000

IF: 1:20-1:200

Validations



mouse heart tissue were subjected to SDS PAGE followed by western blot with Catalog No:109560(CRIP2 Antibody) at dilution of 1:1500



Immunofluorescent analysis of HeLa cells using Catalog No:109560(CRIP2 Antibody) at dilution of 1:50 and Alexa Fluor 488-conjugated AffiniPure Goat Anti-Rabbit IgG(H+L)