

CREM antibody



Catalog Number: 109554

Product name

CREM antibody

IP: 1:200-1:1000

IHC: 1:20-1:200

Specificity

Human, Mouse, Rat; other species not tested.

Antibody description

CREM Rabbit Polyclonal antibody. Positive IHC detected in human prostate cancer tissue. Positive WB detected in rat testis tissue. Positive IP detected in mouse testis tissue. Observed molecular weight by Western-blot: 38 kDa

Preparation

This antibody was obtained by immunization of CREM recombinant protein (Accession Number: NM_001881). Purification method: Antigen affinity purified.

Formulation

PBS with 0.02% sodium azide and 50% glycerol pH 7.3.

Storage

Store at -20°C. DO NOT ALIQUOT

Clonality

Polyclonal

Ig Type

Rabbit IgG

Applications

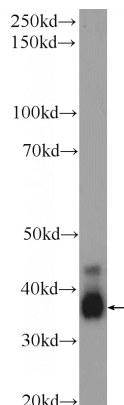
ELISA, IHC, WB, IP

Dilutions

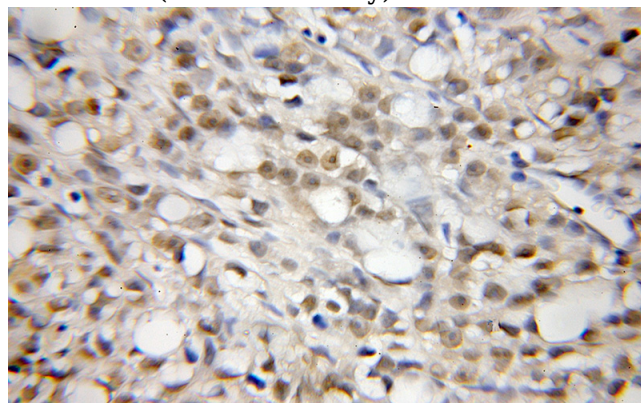
Recommended Dilution:

WB: 1:200-1:1000

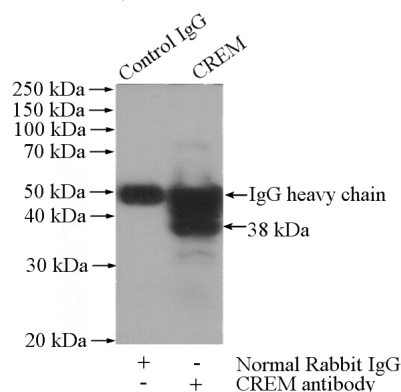
Validations



rat testis tissue were subjected to SDS PAGE followed by western blot with Catalog No:109554(CREM Antibody) at dilution of 1:300



Immunohistochemical of paraffin-embedded human prostate cancer using Catalog No:109554(CREM antibody) at dilution of 1:50 (under 10x lens)



IP Result of anti-CREM (IP:Catalog No:109554,

CREM antibody



Catalog Number: 109554

4ug; Detection:Catalog No:109554 1:300) with mouse testis tissue lysate 1800ug.