

# CREB3L1,OASIS antibody



Catalog Number: 109547

## Product name

CREB3L1,OASIS antibody

## Specificity

Human,Mouse,Rat; other species not tested.

## Antibody description

CREB3L1,OASIS Rabbit Polyclonal antibody.  
Positive IF detected in A549 cells. Positive IHC detected in human prostate cancer tissue. Positive WB detected in A549 cells, COLO 320 cells. Observed molecular weight by Western-blot: 57 kDa

## Preparation

This antibody was obtained by immunization of CREB3L1,OASIS recombinant protein (Accession Number: NM\_052854). Purification method: Antigen affinity purified.

## Formulation

PBS with 0.1% sodium azide and 50% glycerol pH 7.3.

## Storage

Store at -20°C. DO NOT ALIQUOT

## Clonality

Polyclonal

## Ig Type

Rabbit IgG

## Applications

ELISA, WB, IHC, IF

## Dilutions

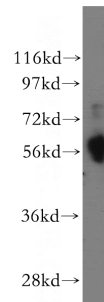
Recommended Dilution:

WB: 1:200-1:2000

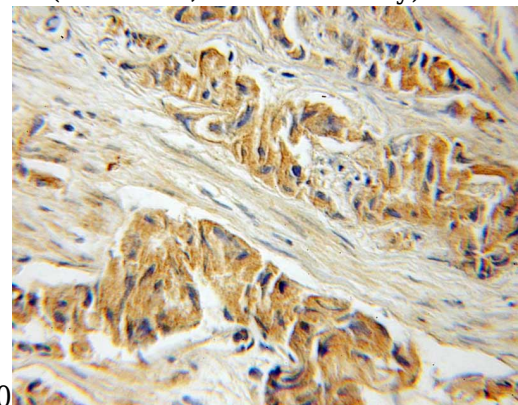
IHC: 1:20-1:200


IF: 1:50-1:500

## Validations



A549 cells were subjected to SDS PAGE followed by western blot with Catalog No:109547(CREB3L1,OASIS antibody) at dilution



Immunohistochemical of paraffin-embedded human prostate cancer using Catalog No:109547(CREB3L1,OASIS antibody) at dilution of 1:50 (under 25x lens) 

Immunofluorescent analysis of (10% Formaldehyde) fixed A549 cells using Catalog No:109547(CREB3L1,OASIS Antibody) at dilution of 1:50 and Alexa Fluor 488-conjugated AffiniPure Goat Anti-Rabbit IgG(H+L)