

CREB1 antibody

Catalog Number: 109545

Product name

CREB1 antibody

Specificity

Human, Mouse, Rat, Monkey; other species not tested.

Antibody description

CREB1 Rabbit Polyclonal antibody. Positive FC detected in HEK-293 cells. Positive IHC detected in human thyroid tissue, human prostate cancer tissue. Positive IF detected in HEK-293 cells. Positive WB detected in multi-cells/tissue, COS-7 cells, HEK-293 cells, HeLa cells, Jurkat cells, K-562 cells, mouse brain tissue, mouse lung tissue, NIH/3T3 cells, rat brain tissue. Positive IP detected in HEK-293 cells. Observed molecular weight by Western-blot: 43-46 kDa

Preparation

This antibody was obtained by immunization of CREB1 recombinant protein (Accession Number: NM_134442). Purification method: Antigen affinity purified.

Formulation

PBS with 0.1% sodium azide and 50% glycerol pH 7.3.

Storage

Store at -20°C. DO NOT ALIQUOT

Clonality

Polyclonal

Ig Type

Rabbit IgG

Applications

ELISA, IP, WB, IF, IHC, FC

Dilutions

Recommended Dilution:

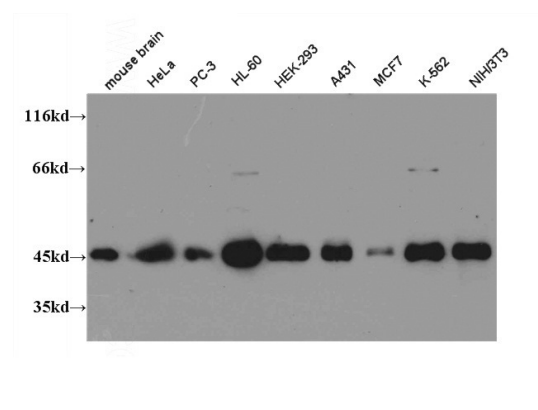
WB: 1:500-1:5000

IP: 1:200-1:2000

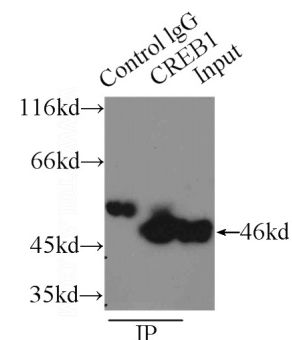
IHC: 1:20-1:200

IF: 1:10-1:100

Validations



WB result of Catalog No:109545 (CREB1 antibody) with various lysates at dilution of

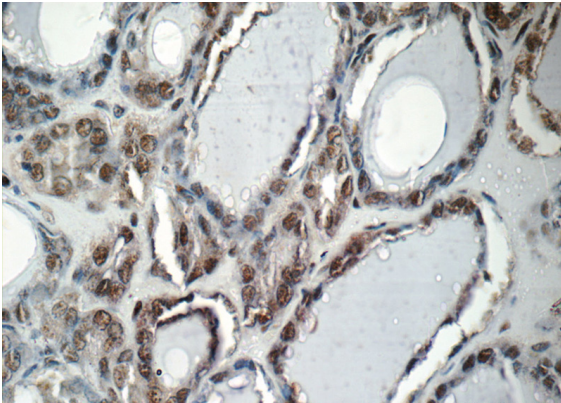


1:1,500.

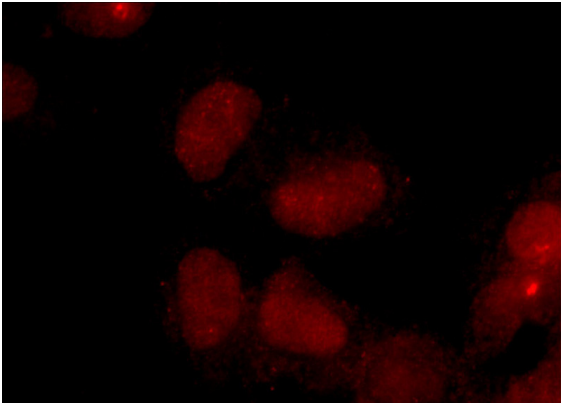
IP Result of anti-CREB1 (IP:Catalog No:109545, 3ug; Detection:Catalog No:109545 1:600) with HEK-293 cells lysate 2000ug.

CREB1 antibody

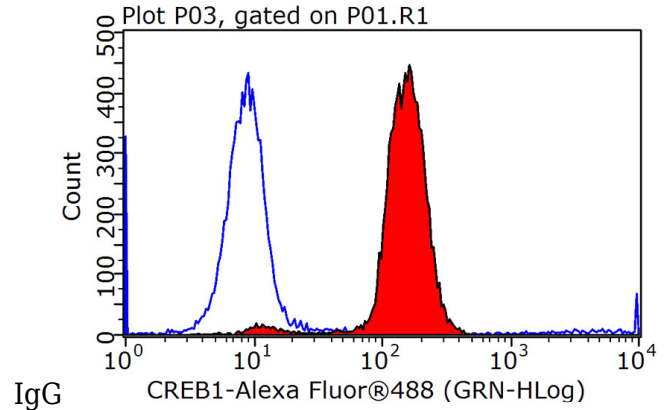
Catalog Number: 109545



Immunohistochemistry of paraffin-embedded human thyroid tissue slide using Catalog No:109545(CREB1 Antibody) at dilution of 1:50 (under 40x lens)



Immunofluorescent analysis of HEK-293 cells using Catalog No:109545(CREB1 Antibody) at dilution of 1:25 and Rhodamine-Goat anti-Rabbit



1X10⁶ HEK-293 cells were stained with 0.2ug CREB1 antibody (Catalog No:109545, red) and control antibody (blue). Fixed with 90% MeOH blocked with 3% BSA (30 min). Alexa Fluor 488-conjugated AffiniPure Goat Anti-Rabbit IgG(H+L) with dilution 1:1000.