

Creatine kinase B type-Specific antibody



Catalog Number: 109544

Product name

Creatine kinase B type-Specific antibody

Recommended Dilution:

WB: 1:1000-1:10000

Specificity

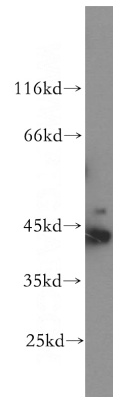
Human, Mouse, Rat; other species not tested.

IHC: 1:20-1:200

Validations

Antibody description

Creatine kinase B type-Specific Rabbit Polyclonal antibody. Positive IHC detected in human gliomas. Positive WB detected in HEK-293 cells, mouse colon tissue, Y79 cells. Observed molecular weight by Western-blot: 43kd



HEK-293 cells were subjected to SDS PAGE followed by western blot with Catalog No:109544(CKB-Specific antibody) at dilution of 1:1000

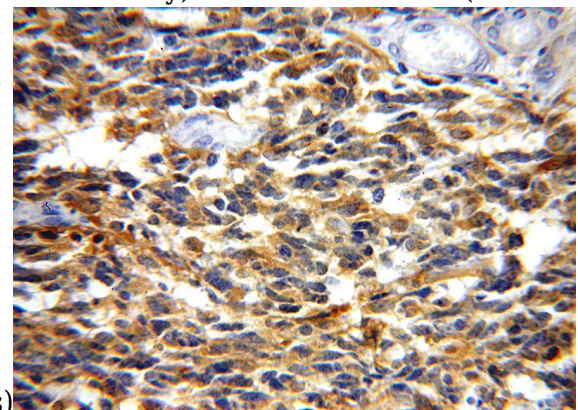
Preparation

This antibody was obtained by immunization of Peptide (Accession Number: NM_001823). Purification method: Antigen affinity purified.

Immunohistochemical of paraffin-embedded human gliomas using Catalog No:109544(CKB-Specific antibody) at dilution of 1:100 (under 10x

Formulation

PBS with 0.02% sodium azide and 50% glycerol pH 7.3.



Storage

Store at -20°C. DO NOT ALIQUOT

Clonality

Polyclonal

Ig Type

Rabbit IgG

Applications

ELISA, WB, IHC

Immunohistochemical of paraffin-embedded human gliomas using Catalog No:109544(CKB-Specific antibody) at dilution of 1:100 (under 40x lens)

Dilutions