

CPXCR1 antibody

Catalog Number: 109534

Product name

CPXCR1 antibody

Specificity

Human, Mouse; other species not tested.

Antibody description

CPXCR1 Rabbit Polyclonal antibody. Positive WB detected in mouse liver tissue, human skeletal muscle tissue. Positive IP detected in mouse skeletal muscle tissue. Observed molecular weight by Western-blot: 28-30 kDa

Preparation

This antibody was obtained by immunization of CPXCR1 recombinant protein (Accession Number: NM_001184771). Purification method: Antigen affinity purified.

Formulation

PBS with 0.1% sodium azide and 50% glycerol pH 7.3.

Storage

Store at -20°C. DO NOT ALIQUOT

Clonality

Polyclonal

Ig Type

Rabbit IgG

Applications

ELISA, WB, IP

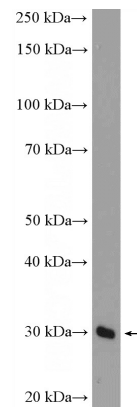
Dilutions

Recommended Dilution:

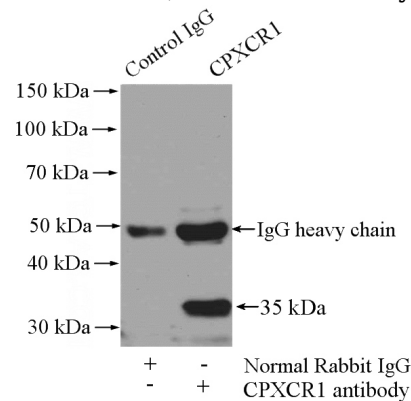
WB: 1:200-1:1000

IP: 1:200-1:1000

Validations



mouse liver tissue were subjected to SDS PAGE followed by western blot with Catalog No:109534(CPXCR1 Antibody) at dilution of 1:300



IP Result of anti-CPXCR1 (IP:Catalog No:109534, 4ug; Detection:Catalog No:109534 1:300) with mouse skeletal muscle tissue lysate 3600ug.