

CPVL antibody

Catalog Number: 109533

Product name

CPVL antibody

WB: 1:1000-1:10000

IHC: 1:20-1:200

Specificity

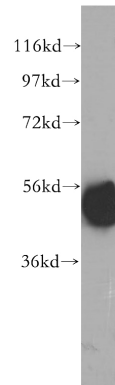
Human, Mouse, Rat; other species not tested.

IF: 1:50-1:500

Antibody description

CPVL Rabbit Polyclonal antibody. Positive IHC detected in human liver cancer tissue, human liver tissue. Positive IF detected in HepG2 cells. Positive WB detected in human liver tissue, HepG2 cells, human heart tissue, human kidney tissue. Observed molecular weight by Western-blot: 54 kDa

Validations



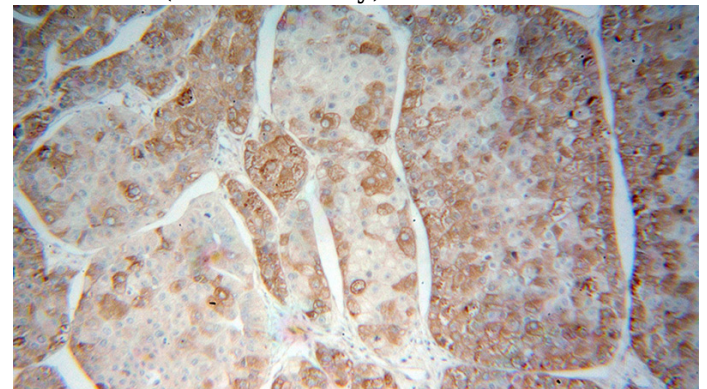
Preparation

This antibody was obtained by immunization of CPVL recombinant protein (Accession Number: XM_047420530). Purification method: Antigen affinity purified.

human liver tissue were subjected to SDS PAGE followed by western blot with Catalog No:109533(CPVL antibody) at dilution of 1:500

Formulation

PBS with 0.1% sodium azide and 50% glycerol pH 7.3.



Storage

Store at -20°C. DO NOT ALIQUOT

Clonality

Polyclonal

Immunohistochemical of paraffin-embedded human liver cancer using Catalog No:109533(CPVL antibody) at dilution of 1:200 (under 10x lens)

Ig Type

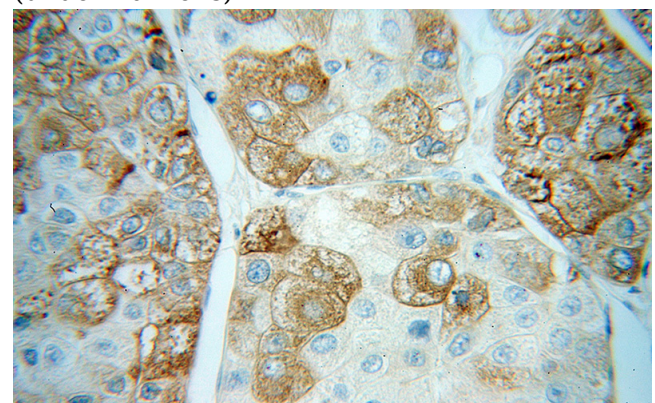
Rabbit IgG

Applications

ELISA, WB, IHC, IF

Dilutions

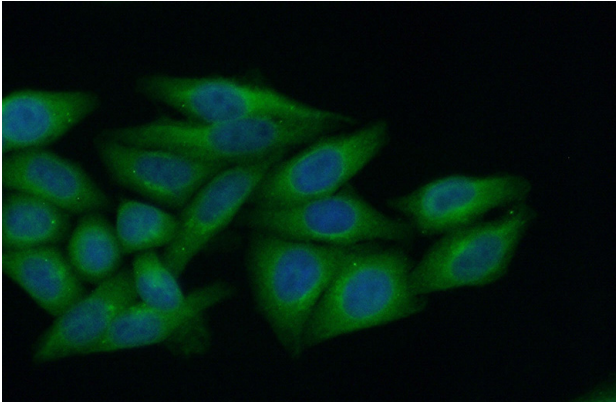
Recommended Dilution:



CPVL antibody

Catalog Number: 109533

Immunohistochemical of paraffin-embedded human liver cancer using Catalog No:109533(CPVL antibody) at dilution of 1:200 (under 40x lens)



Immunofluorescent analysis of (10% Formaldehyde) fixed HepG2 cells using Catalog No:109533(CPVL Antibody) at dilution of 1:50 and Alexa Fluor 488-conjugated AffiniPure Goat Anti-Rabbit IgG(H+L)