

CPT1B-specific antibody



Catalog Number: 109531

Product name

CPT1B-specific antibody

Specificity

Human, Mouse, Rat; other species not tested.

Antibody description

CPT1B-specific Rabbit Polyclonal antibody. Positive IP detected in mouse skeletal muscle tissue. Positive WB detected in mouse heart tissue, rat skeletal muscle tissue. Observed molecular weight by Western-blot: 75-85 kDa

Preparation

This antibody was obtained by immunization of CPT1B-specific recombinant protein (Accession Number: BC131570). Purification method: Antigen affinity purified.

Formulation

PBS with 0.02% sodium azide and 50% glycerol pH 7.3.

Storage

Store at -20°C. DO NOT ALIQUOT

Clonality

Polyclonal

Ig Type

Rabbit IgG

Applications

ELISA, WB, IP

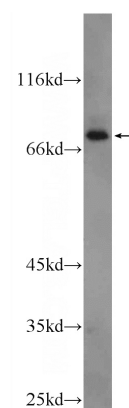
Dilutions

Recommended Dilution:

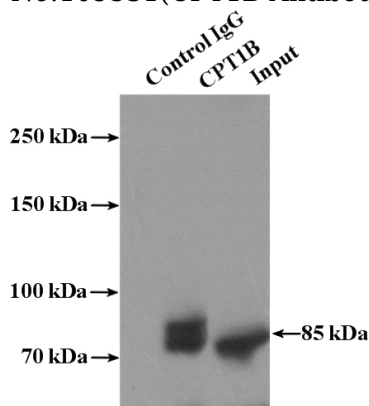
WB: 1:500-1:5000

IP: 1:200-1:2000

Validations



mouse heart tissue were subjected to SDS PAGE followed by western blot with Catalog No:109531(CPT1B Antibody) at dilution of 1:1000



IP Result of anti-CPT1B (IP:Catalog No:109531, 4ug; Detection:Catalog No:109531 1:600) with mouse skeletal muscle tissue lysate 2200ug.