

CPSF7 antibody

Catalog Number: 109529

Product name

CPSF7 antibody

IHC: 1:20-1:200

IF: 1:50-1:500

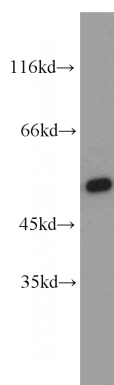
Specificity

Human, Mouse, Rat; other species not tested.

Antibody description

CPSF7 Rabbit Polyclonal antibody. Positive IHC detected in human testis tissue, human skin tissue. Positive IF detected in HeLa cells. Positive WB detected in mouse brain tissue, HEK-293 cells, HeLa cells, mouse uterus tissue. Observed molecular weight by Western-blot: 52 kDa or 56 kDa

Validations



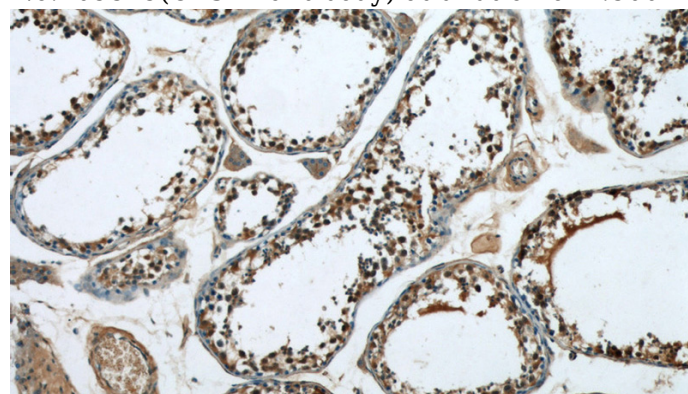
Preparation

This antibody was obtained by immunization of Peptide (Accession Number: NM_001136040). Purification method: Antigen affinity purified.

mouse brain tissue were subjected to SDS PAGE followed by western blot with Catalog No:109529(CPSF7 antibody) at dilution of 1:500

Formulation

PBS with 0.02% sodium azide and 50% glycerol pH 7.3.



Storage

Store at -20°C. DO NOT ALIQUOT

Clonality

Polyclonal

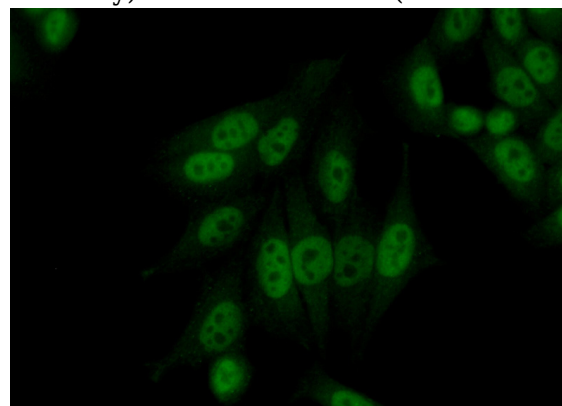
Immunohistochemical of paraffin-embedded human testis using Catalog No:109529(CPSF7 antibody) at dilution of 1:50 (under 10x lens)

Ig Type

Rabbit IgG

Applications

ELISA, WB, IHC, IF



Dilutions

Recommended Dilution:

WB: 1:200-1:2000

Immunofluorescent analysis of (10% Formaldehyde) fixed HeLa cells using Catalog

CPSF7 antibody



Catalog Number: 109529

No:109529(CPSF7 Antibody) at dilution of 1:50

and Alexa Fluor 488-conjugated AffiniPure Goat
Anti-Rabbit IgG(H+L)