

CPSF6 antibody



Catalog Number: 109528

Product name

CPSF6 antibody

IP: 1:200-1:1000

IHC: 1:20-1:200

Specificity

Human, Mouse, Rat; other species not tested.

Antibody description

CPSF6 Rabbit Polyclonal antibody. Positive WB detected in HeLa cells, Jurkat cells, PC-3 cells. Positive IP detected in HeLa cells. Positive IHC detected in human kidney tissue, human heart tissue. Observed molecular weight by Western blot: 55-68kd

Preparation

This antibody was obtained by immunization of CPSF6 recombinant protein (Accession Number: NM_001300947). Purification method: Antigen affinity purified.

Formulation

PBS with 0.02% sodium azide and 50% glycerol pH 7.3.

Storage

Store at -20°C. DO NOT ALIQUOT

Clonality

Polyclonal

Ig Type

Rabbit IgG

Applications

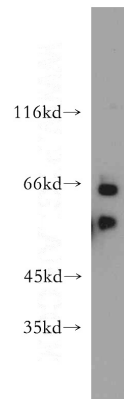
ELISA, WB, IHC, IP

Dilutions

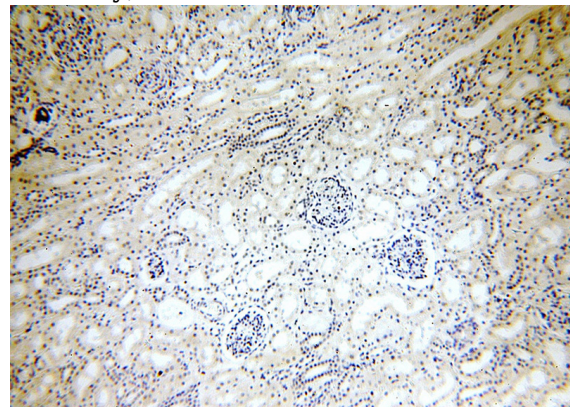
Recommended Dilution:

WB: 1:200-1:2000

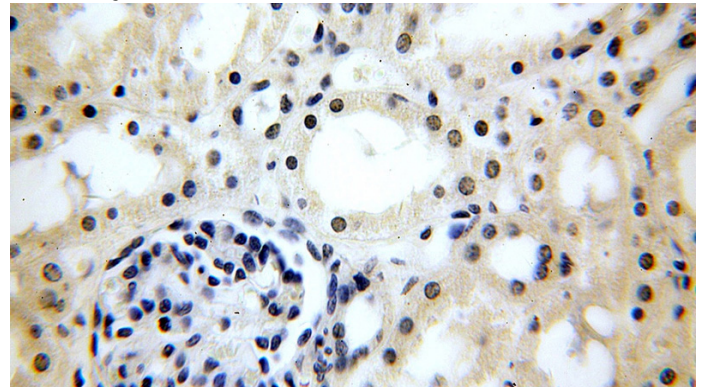
Validations



HeLa cells were subjected to SDS PAGE followed by western blot with Catalog No:109528(CPSF6 antibody) at dilution of 1:100



Immunohistochemical of paraffin-embedded human kidney using Catalog No:109528(CPSF6 antibody) at dilution of 1:50 (under 10x lens)

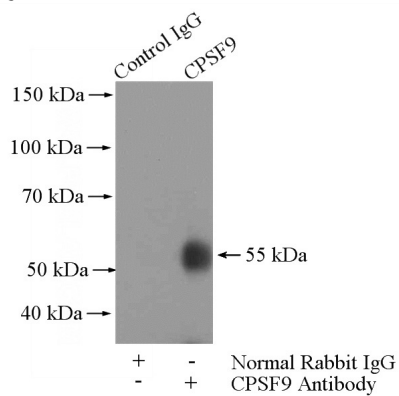


Immunohistochemical of paraffin-embedded human kidney using Catalog No:109528(CPSF6

CPSF6 antibody

Catalog Number: 109528

antibody) at dilution of 1:50 (under 40x lens)



IP Result of anti-CPSF6 (IP:Catalog No:109528, 4ug; Detection:Catalog No:109528 1:300) with HeLa cells lysate 3200ug.