

CPSF4 antibody

Catalog Number: 109527

Product name

CPSF4 antibody

IP: 1:200-1:1000

IHC: 1:20-1:200

Specificity

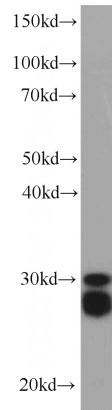
Human, Mouse; other species not tested.

IF: 1:20-1:200

Antibody description

CPSF4 Rabbit Polyclonal antibody. Positive WB detected in Jurkat cells, HeLa cells, HepG2 cells. Positive IP detected in HeLa cells. Positive IHC detected in human endometrial cancer tissue. Positive IF detected in HepG2 cells. Observed molecular weight by Western-blot: 30 kDa

Validations



Preparation

This antibody was obtained by immunization of CPSF4 recombinant protein (Accession Number: NM_001081559). Purification method: Antigen affinity purified.

Jurkat cells were subjected to SDS PAGE followed by western blot with Catalog No:109527(CPSF4 antibody) at dilution of 1:300

Formulation

PBS with 0.02% sodium azide and 50% glycerol pH 7.3.

Storage

Store at -20°C. DO NOT ALIQUOT

Clonality

Polyclonal

Ig Type

Rabbit IgG

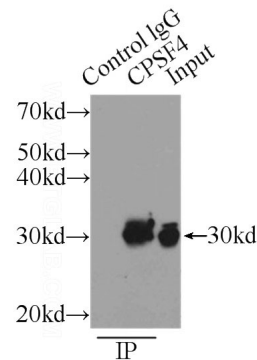
Applications

ELISA, WB, IHC, IF, IP

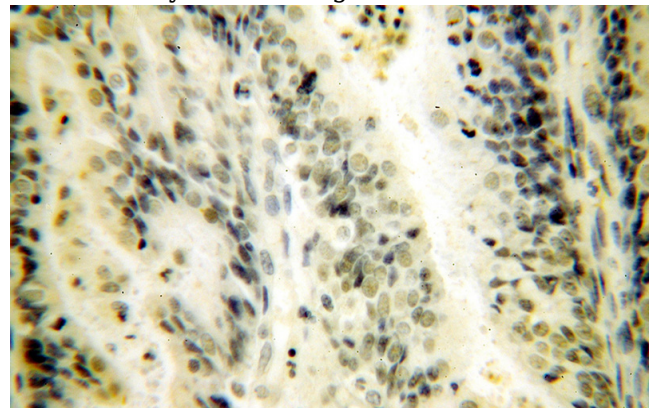
Dilutions

Recommended Dilution:

WB: 1:200-1:2000



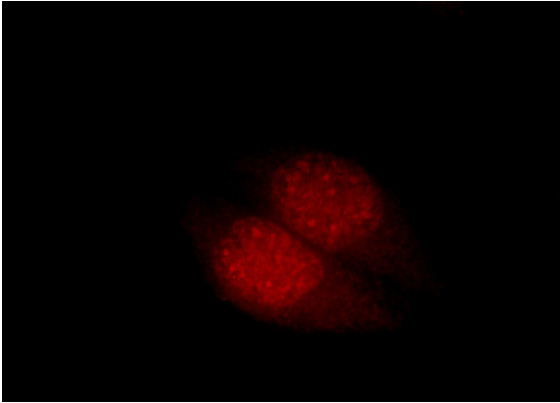
IP Result of anti-CPSF4 (IP:Catalog No:109527, 3ug; Detection:Catalog No:109527 1:400) with HeLa cells lysate 1000ug.



CPSF4 antibody

Catalog Number: 109527

Immunohistochemical of paraffin-embedded human endometrial cancer using Catalog No:109527(CPSF4 antibody) at dilution of 1:50 (under 40x lens)



Immunofluorescent analysis of HepG2 cells, using CPSF4 antibody Catalog No:109527 at 1:50 dilution and Rhodamine-labeled goat anti-rabbit IgG (red).