

# CPSF3 antibody



Catalog Number: 109526

## Product name

CPSF3 antibody

## Specificity

human, mouse, rat; other species not tested.

## Antibody description

CPSF3 Rabbit Polyclonal antibody. Positive WB detected in HEK-293 cells, HepG2 cells, human brain tissue, human skin tissue. Observed molecular weight by Western-blot: 77kd

## Preparation

This antibody was obtained by immunization of CPSF3 recombinant protein (Accession Number: NM\_016207). Purification method: Antigen affinity purified.

## Formulation

PBS with 0.1% sodium azide and 50% glycerol pH 7.3.

## Storage

Store at -20°C. DO NOT ALIQUOT

## Clonality

Polyclonal

## Ig Type

Rabbit IgG

## Applications

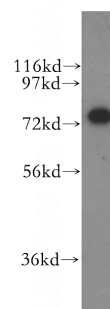
ELISA, WB

## Dilutions

Recommended Dilution:

WB: 1:500-1:5000

## Validations



HEK-293 cells were subjected to SDS PAGE followed by western blot with Catalog No:109526(CPSF3 antibody) at dilution of 1:300