

# CPSF1 antibody



Catalog Number: 109524

---

## Product name

CPSF1 antibody

## Specificity

human, mouse, rat; other species not tested.

## Antibody description

CPSF1 Rabbit Polyclonal antibody. Positive WB detected in Jurkat cells, HeLa cells, human brain tissue. Observed molecular weight by Western-blot: 160kd

## Preparation

This antibody was obtained by immunization of CPSF1 recombinant protein (Accession Number: NM\_013291). Purification method: Antigen affinity purified.

## Formulation

PBS with 0.1% sodium azide and 50% glycerol pH 7.3.

## Storage

Store at -20°C. DO NOT ALIQUOT

## Clonality

Polyclonal

## Ig Type

Rabbit IgG

## Applications

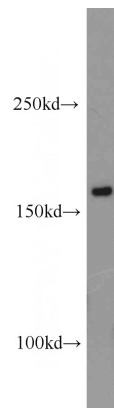
ELISA, WB

## Dilutions

Recommended Dilution:

WB: 1:200-1:2000

## Validations



Jurkat cells were subjected to SDS PAGE followed by western blot with Catalog No:109524(CPSF1 antibody) at dilution of 1:500