

# CPS1 antibody

Catalog Number: 109522

## Product name

CPS1 antibody

## Specificity

Human, Mouse, Rat; other species not tested.

## Antibody description

CPS1 Rabbit Polyclonal antibody. Positive IF detected in HepG2 cells. Positive WB detected in HepG2 cells, mouse liver tissue. Observed molecular weight by Western-blot: 116 kDa, 165 kDa

## Preparation

This antibody was obtained by immunization of Peptide (Accession Number: XM\_011510641). Purification method: Antigen affinity purified.

## Formulation

PBS with 0.02% sodium azide and 50% glycerol pH 7.3.

## Storage

Store at -20°C. DO NOT ALIQUOT

## Clonality

Polyclonal

## Ig Type

Rabbit IgG

## Applications

ELISA, IF, WB

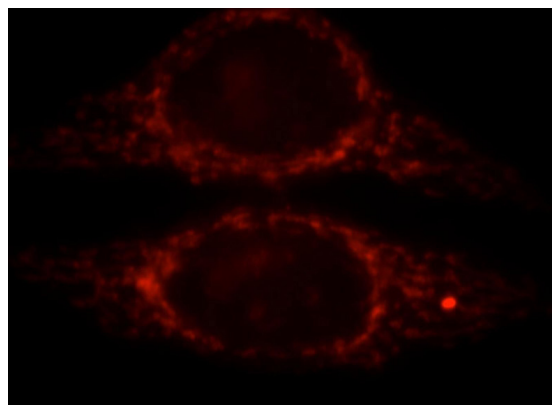
## Dilutions

Recommended Dilution:

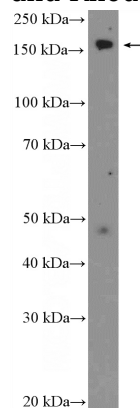
WB: 1:500-1:5000

IF: 1:10-1:100

## Validations



Immunofluorescent analysis of HepG2 cells, using CPS1 antibody Catalog No:109522 at 1:25 dilution and Rhodamine-labeled goat anti-rabbit IgG (red).



HepG2 cells were subjected to SDS PAGE followed by western blot with Catalog No:109522(CPS1 Antibody) at dilution of 1:1000