

# CPNE3 antibody



Catalog Number: 109516

## Product name

CPNE3 antibody

## Immunogen

[Human CPNE3 Recombinant protein \(GST tag\)](#)

## Specificity

Human, Mouse, Rat; other species not tested.

## Antibody description

CPNE3 Rabbit Polyclonal antibody. Positive IHC detected in human prostate cancer tissue. Positive WB detected in Y79 cells. Observed molecular weight by Western-blot: 60 kDa

## Preparation

This antibody was obtained by immunization of CPNE3 recombinant protein (Accession Number: XM\_005251093). Purification method: Antigen affinity purified.

## Formulation

PBS with 0.1% sodium azide and 50% glycerol pH 7.3.

## Storage

Store at -20°C. DO NOT ALIQUOT

## Clonality

Polyclonal

## Ig Type

Rabbit IgG

## Applications

ELISA, WB, IHC

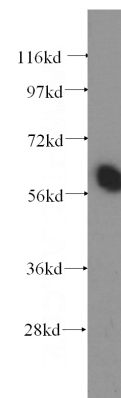
## Dilutions

Recommended Dilution:

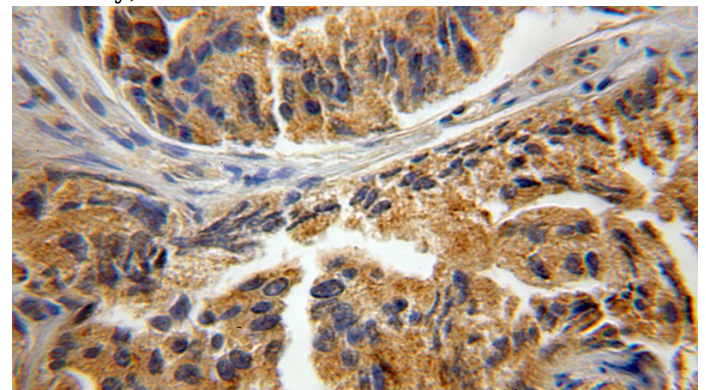
WB: 1:200-1:2000

IHC: 1:20-1:200

## Validations



Y79 cells were subjected to SDS PAGE followed by western blot with Catalog No:109516(CPNE3 antibody) at dilution of 1:400



Immunohistochemical of paraffin-embedded human prostate cancer using Catalog No:109516(CPNE3 antibody) at dilution of 1:50 (under 10x lens)