

CPNE2 antibody

Catalog Number: 109515

Product name

CPNE2 antibody

Specificity

Human, Mouse, Rat; other species not tested.

Antibody description

CPNE2 Rabbit Polyclonal antibody. Positive WB detected in mouse brain tissue, mouse liver tissue, mouse stomach tissue. Positive IP detected in mouse brain tissue. Observed molecular weight by Western-blot: 61 kDa

Preparation

This antibody was obtained by immunization of CPNE2 recombinant protein (Accession Number: NM_152727). Purification method: Antigen affinity purified.

Formulation

PBS with 0.1% sodium azide and 50% glycerol pH 7.3.

Storage

Store at -20°C. DO NOT ALIQUOT

Clonality

Polyclonal

Ig Type

Rabbit IgG

Applications

ELISA, WB, IP

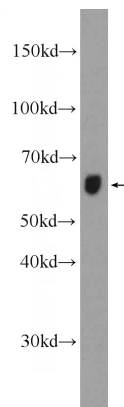
Dilutions

Recommended Dilution:

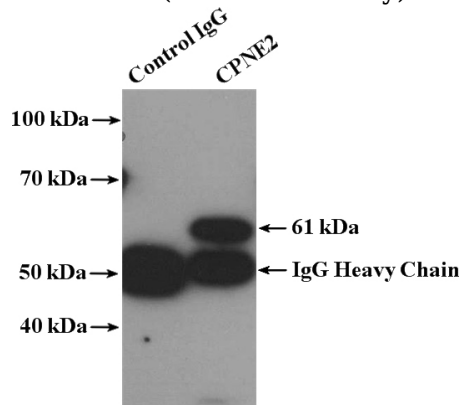
WB: 1:200-1:2000

IP: 1:200-1:1000

Validations



mouse brain tissue were subjected to SDS PAGE followed by western blot with Catalog No:109515(CPNE2 Antibody) at dilution of 1:600



IP Result of anti-CPNE2 (IP:Catalog No:109515, 4ug; Detection:Catalog No:109515 1:300) with mouse brain tissue lysate 3680ug.