

CPLX4 antibody



Catalog Number: 109513

Product name

CPLX4 antibody

Recommended Dilution:

WB: 1:500-1:5000

Immunogen

[Human CPLX4 Recombinant protein \(GST tag\)](#)

IP: 1:500-1:5000

IHC: 1:20-1:200

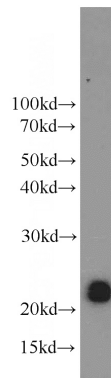
Specificity

Human, Mouse, Rat; other species not tested.

Validations

Antibody description

CPLX4 Rabbit Polyclonal antibody. Positive IHC detected in human brain tissue. Positive IP detected in Y79 cells. Positive WB detected in Y79 cells. Observed molecular weight by Western-blot: 21-23kd



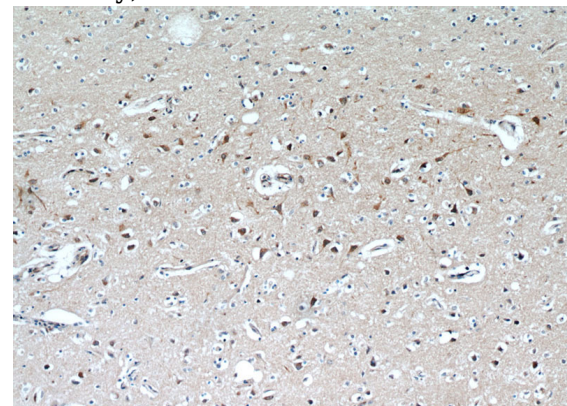
Preparation

This antibody was obtained by immunization of CPLX4 recombinant protein (Accession Number: NM_181654). Purification method: Antigen affinity purified.

Y79 cells were subjected to SDS PAGE followed by western blot with Catalog No:109513(CPLX4 antibody) at dilution of 1:1500

Formulation

PBS with 0.02% sodium azide and 50% glycerol pH 7.3.



Storage

Store at -20°C. DO NOT ALIQUOT

Clonality

Polyclonal

Immunohistochemical of paraffin-embedded human brain using Catalog No:109513(CPLX4 antibody) at dilution of 1:100 (under 10x lens)

Ig Type

Rabbit IgG

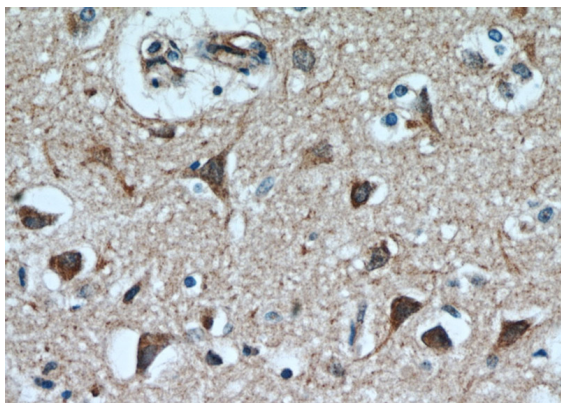
Applications

ELISA, WB, IHC, IP

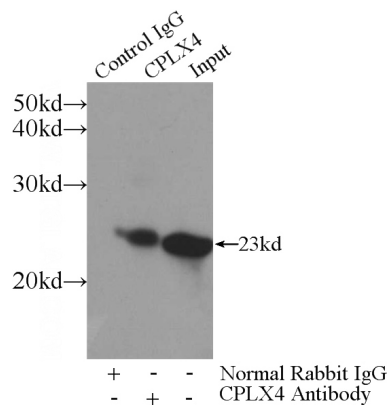
Dilutions

CPLX4 antibody

Catalog Number: 109513



Immunohistochemical of paraffin-embedded human brain using Catalog No:109513(CPLX4 antibody) at dilution of 1:100 (under 40x lens)



IP Result of anti-CPLX4 (IP:Catalog No:109513, 3ug; Detection:Catalog No:109513 1:1000) with Y79 cells lysate 960ug.