

CPLX3 antibody



Catalog Number: 109512

Product name

CPLX3 antibody

IP: 1:200-1:1000

IF: 1:10-1:100

Specificity

Human, Mouse, Rat; other species not tested.

Antibody description

CPLX3 Rabbit Polyclonal antibody. Positive IF detected in HepG2 cells. Positive WB detected in mouse brain tissue, human brain tissue. Positive IP detected in mouse brain tissue. Observed molecular weight by Western-blot: 20-23 kDa

Preparation

This antibody was obtained by immunization of CPLX3 recombinant protein (Accession Number: NM_001030005). Purification method: Antigen affinity purified.

Formulation

PBS with 0.02% sodium azide and 50% glycerol pH 7.3.

Storage

Store at -20°C. DO NOT ALIQUOT

Clonality

Polyclonal

Ig Type

Rabbit IgG

Applications

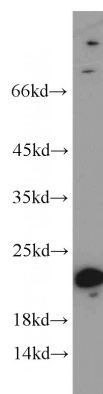
ELISA, WB, IF, IP

Dilutions

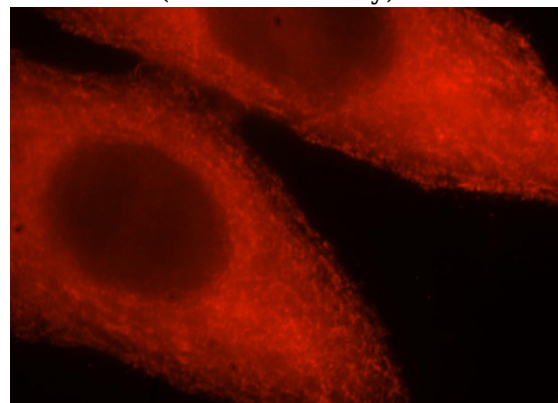
Recommended Dilution:

WB: 1:200-1:2000

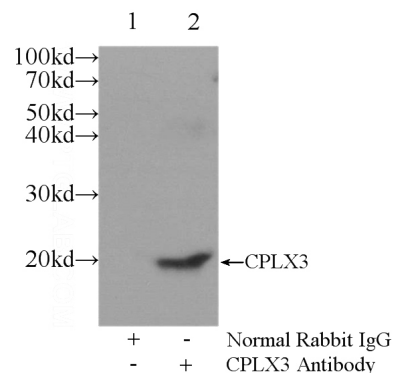
Validations



mouse brain tissue were subjected to SDS PAGE followed by western blot with Catalog No:109512(CPLX3 antibody) at dilution of 1:300



Immunofluorescent analysis of HepG2 cells, using CPLX3 antibody Catalog No:109512 at 1:25 dilution and Rhodamine-labeled goat anti-rabbit



IgG (red).

IP Result of anti-CPLX3 (IP:Catalog No:109512,

CPLX3 antibody



Catalog Number: 109512

3ug; Detection:Catalog No:109512 1:300) with mouse brain tissue lysate 6000ug.