

CPLX1 antibody

Catalog Number: 109509

Product name

CPLX1 antibody

Immunogen

[Human CPLX1 Recombinant protein \(GST tag\)](#)

Specificity

Human, Mouse, Rat; other species not tested.

Antibody description

CPLX1 Rabbit Polyclonal antibody. Positive WB detected in mouse brain tissue, rat brain tissue. Positive IP detected in mouse brain tissue. Positive IF detected in SH-SY5Y cells. Positive IHC detected in mouse brain tissue. Observed molecular weight by Western-blot: 15-20 kDa

Preparation

This antibody was obtained by immunization of CPLX1 recombinant protein (Accession Number: NM_006651). Purification method: Antigen affinity purified.

Formulation

PBS with 0.1% sodium azide and 50% glycerol pH 7.3.

Storage

Store at -20°C. DO NOT ALIQUOT

Clonality

Polyclonal

Ig Type

Rabbit IgG

Applications

ELISA, WB, IP, IHC, IF

Dilutions

Recommended Dilution:

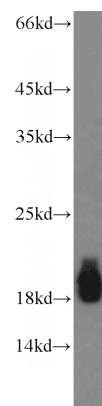
WB: 1:500-1:5000

IP: 1:200-1:1000

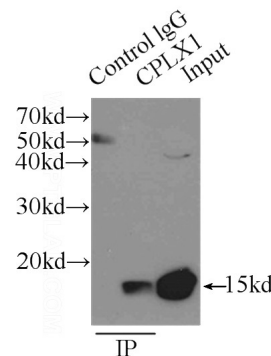
IHC: 1:20-1:200

IF: 1:10-1:100

Validations



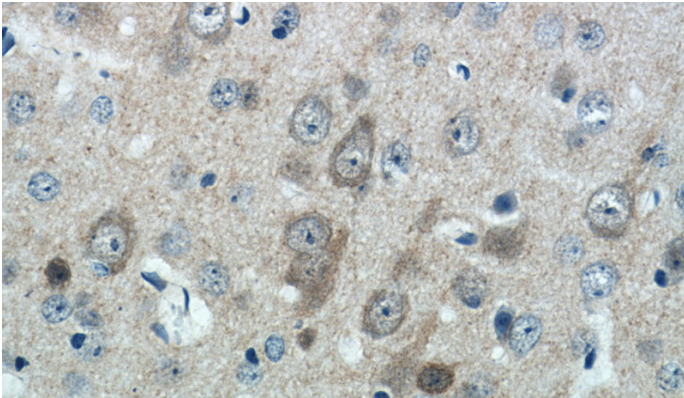
mouse brain tissue were subjected to SDS PAGE followed by western blot with Catalog No:109509(CPLX1 antibody) at dilution of 1:1500



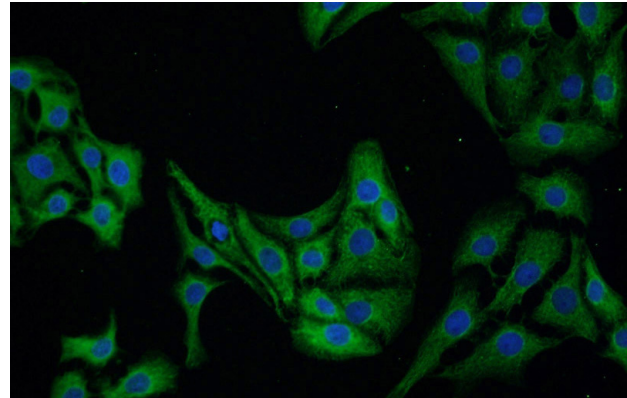
IP Result of anti-CPLX1 (IP:Catalog No:109509, 3ug; Detection:Catalog No:109509 1:200) with mouse brain tissue lysate 6500ug.

CPLX1 antibody

Catalog Number: 109509



Immunohistochemistry of paraffin-embedded mouse brain tissue slide using Catalog No:109509(CPLX1 Antibody) at dilution of 1:50 (under 40x lens)



Immunofluorescent analysis of SH-SY5Y cells using Catalog No:109509(CPLX1 Antibody) at dilution of 1:25 and Alexa Fluor 488-conjugated AffiniPure Goat Anti-Rabbit IgG(H+L)