

# CPEB4 antibody

Catalog Number: 109507

## Product name

CPEB4 antibody

## Specificity

Human, Mouse, Rat; other species not tested.

## Antibody description

CPEB4 Rabbit Polyclonal antibody. Positive IF detected in SH-SY5Y cells. Positive WB detected in SH-SY5Y cells, A375 cells, HeLa cells. Observed molecular weight by Western-blot: 80 kDa

## Preparation

This antibody was obtained by immunization of Peptide (Accession Number: NM\_030627). Purification method: Antigen affinity purified.

## Formulation

PBS with 0.1% sodium azide and 50% glycerol pH 7.3.

## Storage

Store at -20°C. DO NOT ALIQUOT

## Clonality

Polyclonal

## Ig Type

Rabbit IgG

## Applications

ELISA, WB, IF

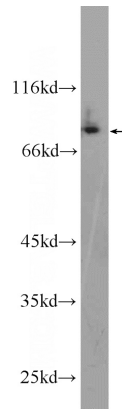
## Dilutions

Recommended Dilution:

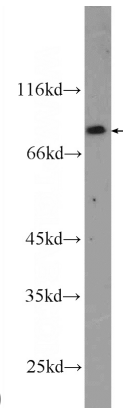
WB: 1:200-1:2000

IF: 1:50-1:500

## Validations

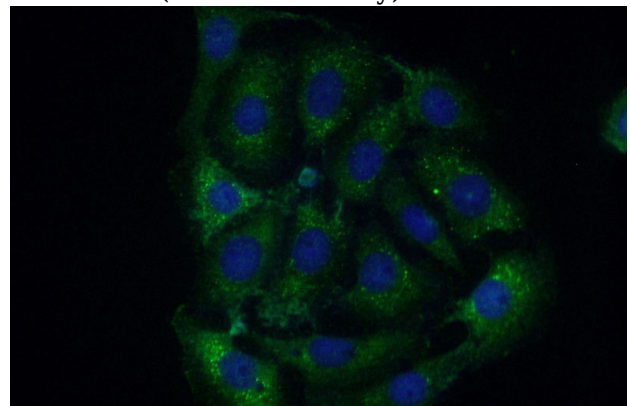


A375 cells were subjected to SDS PAGE followed by western blot with Catalog No:109507(CPEB4



Antibody) at dilution of 1:600

SH-SY5Y cells were subjected to SDS PAGE followed by western blot with Catalog No:109507(CPEB4 Antibody) at dilution of 1:600



Immunofluorescent analysis of (-20oc Acetone) fixed SH-SY5Y cells using Catalog No:109507(CPEB4 Antibody) at dilution of 1:50 and Alexa Fluor 488-conjugated AffiniPure Goat Anti-Rabbit IgG(H+L)