

CPB1 antibody

Catalog Number: 109505

Product name

CPB1 antibody

Specificity

Human, Mouse, Rat; other species not tested.

Antibody description

CPB1 Rabbit Polyclonal antibody. Positive WB detected in mouse pancreas tissue, rat pancreas tissue. Positive IHC detected in human pancreas cancer tissue, human kidney tissue, human pancreas tissue. Observed molecular weight by Western-blot: 47 kDa

Preparation

This antibody was obtained by immunization of CPB1 recombinant protein (Accession Number: NM_001871). Purification method: Antigen affinity purified.

Formulation

PBS with 0.1% sodium azide and 50% glycerol pH 7.3.

Storage

Store at -20°C. DO NOT ALIQUOT

Clonality

Polyclonal

Ig Type

Rabbit IgG

Applications

ELISA, WB, IHC

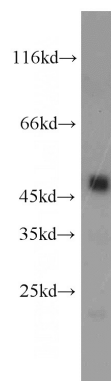
Dilutions

Recommended Dilution:

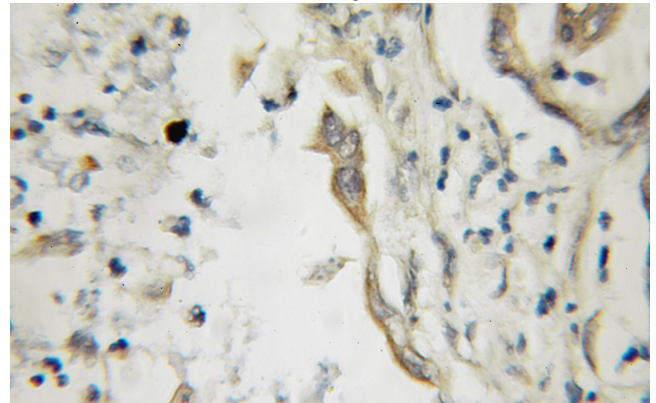
WB: 1:500-1:5000

IHC: 1:20-1:200

Validations



mouse pancreas tissue were subjected to SDS PAGE followed by western blot with Catalog No:109505(PASP antibody) at dilution of 1:1000



Immunohistochemical of paraffin-embedded human pancreas cancer using Catalog No:109505(PASP antibody) at dilution of 1:50 (under 40x lens)