

# COX6A1 antibody



Catalog Number: 109493

## Product name

COX6A1 antibody

## Specificity

Human, Mouse, Rat; other species not tested.

## Antibody description

COX6A1 Rabbit Polyclonal antibody. Positive IHC detected in human pancreas cancer tissue. Positive WB detected in human brain tissue, NIH/3T3 cells. Observed molecular weight by Western-blot: 9.5 kDa

## Preparation

This antibody was obtained by immunization of COX6A1 recombinant protein (Accession Number: NM\_004373). Purification method: Antigen affinity purified.

## Formulation

PBS with 0.1% sodium azide and 50% glycerol pH 7.3.

## Storage

Store at -20°C. DO NOT ALIQUOT

## Clonality

Polyclonal

## Ig Type

Rabbit IgG

## Applications

ELISA, WB, IHC

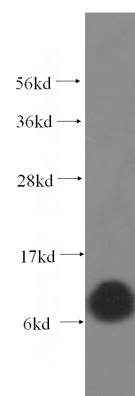
## Dilutions

Recommended Dilution:

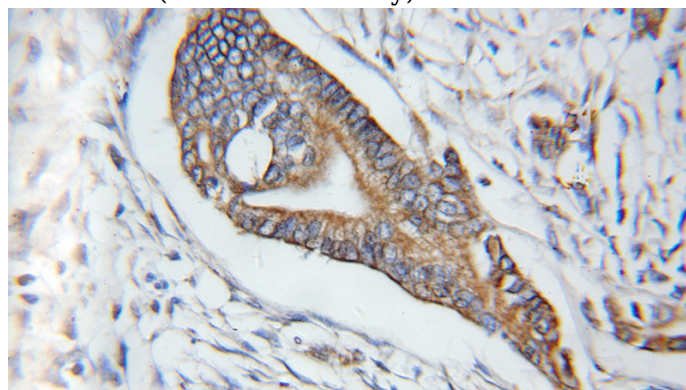
WB: 1:200-1:2000

IHC: 1:20-1:200

## Validations



human brain tissue were subjected to SDS PAGE followed by western blot with Catalog No:109493(COX6A1 antibody) at dilution of 1:500



Immunohistochemical of paraffin-embedded human pancreas cancer using Catalog No:109493(COX6A1 antibody) at dilution of 1:100 (under 10x lens)