

COTL1 antibody

Catalog Number: 109480

Product name

COTL1 antibody

Specificity

Human, Mouse, Rat; other species not tested.

Antibody description

COTL1 Rabbit Polyclonal antibody. Positive IF detected in HepG2 cells. Positive IHC detected in human lung cancer tissue, human kidney tissue. Positive IP detected in mouse kidney tissue. Positive WB detected in mouse brain tissue, HEK-293 cells, HeLa cells, human brain tissue, human kidney tissue, human placenta tissue, mouse placenta tissue, rat brain tissue. Observed molecular weight by Western-blot: 16 kDa

Preparation

This antibody was obtained by immunization of COTL1 recombinant protein (Accession Number: NM_021149). Purification method: Antigen affinity purified.

Formulation

PBS with 0.1% sodium azide and 50% glycerol pH 7.3.

Storage

Store at -20°C. DO NOT ALIQUOT

Clonality

Polyclonal

Ig Type

Rabbit IgG

Applications

ELISA, WB, IHC, IF, IP

Dilutions

Recommended Dilution:

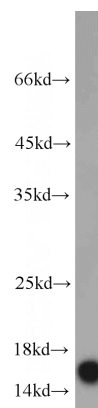
WB: 1:500-1:5000

IP: 1:1000-1:10000

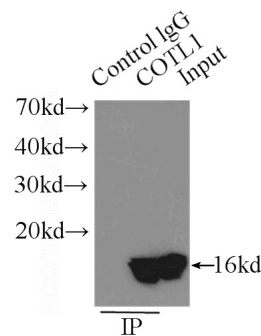
IHC: 1:20-1:200

IF: 1:20-1:200

Validations



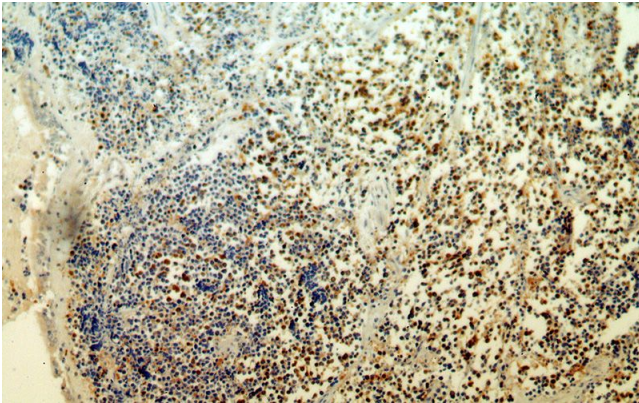
mouse brain tissue were subjected to SDS PAGE followed by western blot with Catalog No:109480(COTL1 antibody) at dilution of 1:1000



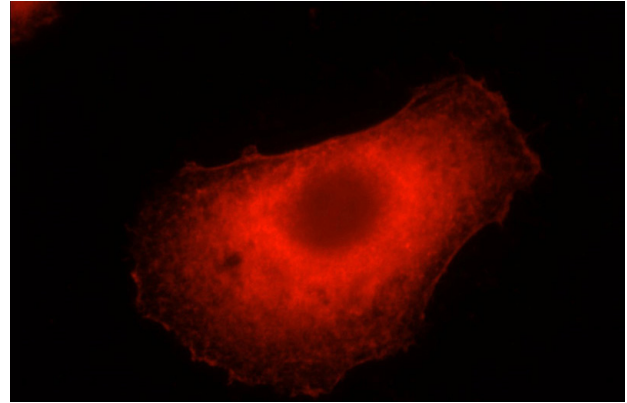
IP Result of anti-COTL1 (IP:Catalog No:109480, 3ug; Detection:Catalog No:109480 1:3000) with mouse kidney tissue lysate 12500ug.

COTL1 antibody

Catalog Number: 109480



Immunohistochemical of paraffin-embedded human lung cancer using Catalog No:109480(COTL1 antibody) at dilution of 1:50 (under 40x lens)



Immunofluorescent analysis of HepG2 cells, using COTL1 antibody Catalog No:109480 at 1:50 dilution and Rhodamine-labeled goat anti-rabbit IgG (red).

Immunohistochemical of paraffin-embedded human lung cancer using Catalog No:109480(COTL1 antibody) at dilution of 1:50 (under 10x lens)

