

CORO1C antibody



Catalog Number: 109475

Product name

CORO1C antibody

WB: 1:500-1:5000

IP: 1:200-1:2000

Specificity

Human, Mouse, Rat; other species not tested.

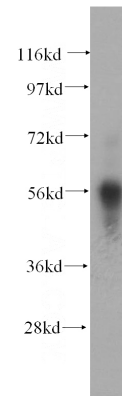
IHC: 1:20-1:200

IF: 1:10-1:100

Antibody description

CORO1C Rabbit Polyclonal antibody. Positive WB detected in mouse skeletal muscle tissue, human heart tissue. Positive IP detected in mouse skeletal muscle tissue. Positive IHC detected in human cervical cancer tissue. Positive IF detected in HepG2 cells. Observed molecular weight by Western-blot: 57kd

Validations



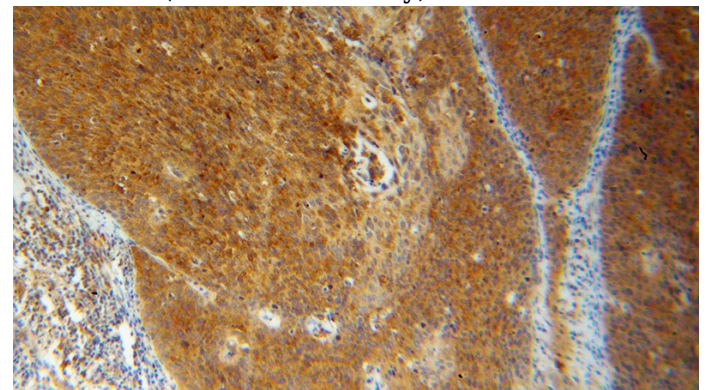
Preparation

This antibody was obtained by immunization of CORO1C recombinant protein (Accession Number: XM_017019123). Purification method: Antigen affinity purified.

mouse skeletal muscle tissue were subjected to SDS PAGE followed by western blot with Catalog No:109475(CORO1C antibody) at dilution of 1:500

Formulation

PBS with 0.02% sodium azide and 50% glycerol pH 7.3.



Storage

Store at -20°C. DO NOT ALIQUOT

Clonality

Polyclonal

Ig Type

Rabbit IgG

Immunohistochemical of paraffin-embedded human cervical cancer using Catalog No:109475(CORO1C antibody) at dilution of 1:100 (under 10x lens)

Applications

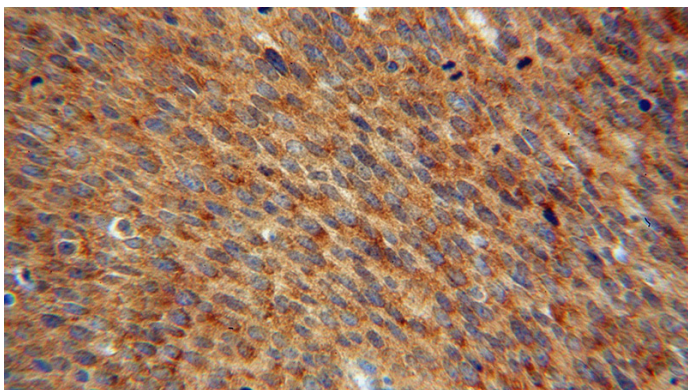
ELISA, WB, IHC, IF, IP

Dilutions

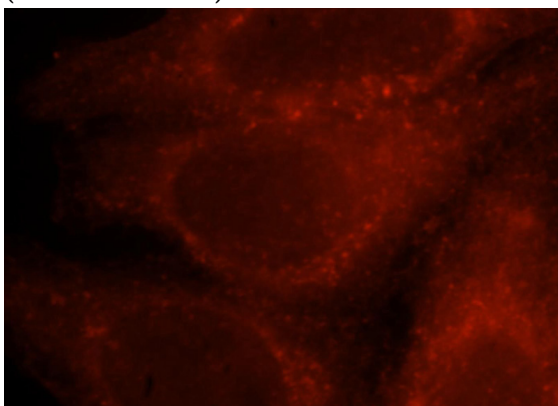
Recommended Dilution:

CORO1C antibody

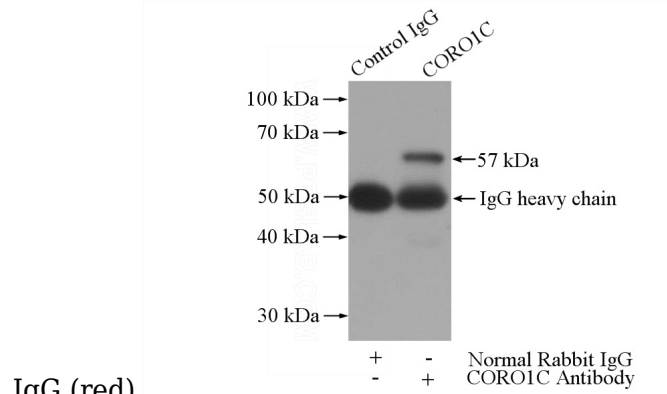
Catalog Number: 109475



Immunohistochemical of paraffin-embedded human cervical cancer using Catalog No:109475(CORO1C antibody) at dilution of 1:100 (under 40x lens)



Immunofluorescent analysis of HepG2 cells, using CORO1C antibody Catalog No:109475 at 1:25 dilution and Rhodamine-labeled goat anti-rabbit



IP Result of anti-CORO1C (IP:Catalog No:109475, 4ug; Detection:Catalog No:109475 1:500) with mouse skeletal muscle tissue lysate 3600ug.