

# CORO1A antibody

Catalog Number: 109474

## Product name

CORO1A antibody

## Specificity

Human, Mouse, Rat; other species not tested.

## Antibody description

CORO1A Rabbit Polyclonal antibody. Positive IP detected in mouse spleen tissue. Positive WB detected in Jurkat cells, HL-60 cells, mouse spleen tissue, rat spleen tissue. Observed molecular weight by Western-blot: 57 kDa

## Preparation

This antibody was obtained by immunization of CORO1A recombinant protein (Accession Number: NM\_007074). Purification method: Antigen affinity purified.

## Formulation

PBS with 0.02% sodium azide and 50% glycerol pH 7.3.

## Storage

Store at -20°C. DO NOT ALIQUOT

## Clonality

Polyclonal

## Ig Type

Rabbit IgG

## Applications

ELISA, WB, IP

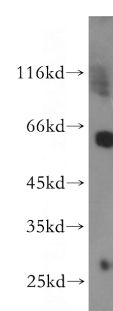
## Dilutions

Recommended Dilution:

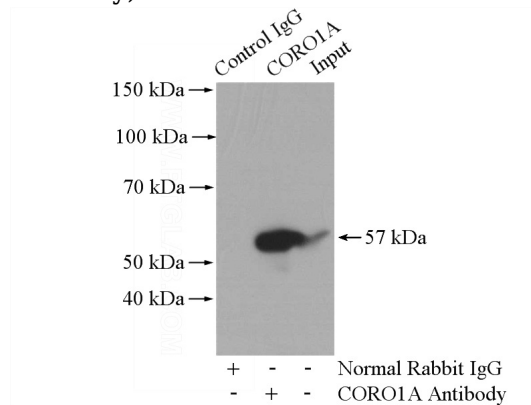
WB: 1:500-1:5000

IP: 1:500-1:5000

## Validations



Jurkat cells were subjected to SDS PAGE followed by western blot with Catalog No:109474(CORO1A antibody) at dilution of 1:600



IP Result of anti-CORO1A (IP:Catalog No:109474, 4ug; Detection:Catalog No:109474 1:1000) with mouse spleen tissue lysate 4800ug.