

# COPS7A antibody

Catalog Number: 109465

## Product name

COPS7A antibody

## Specificity

Human, Mouse, Rat; other species not tested.

## Antibody description

COPS7A Rabbit Polyclonal antibody. Positive WB detected in human heart tissue, human brain tissue, human kidney tissue, mouse kidney tissue. Positive IP detected in mouse heart tissue. Positive IHC detected in human kidney tissue, human heart tissue, human liver tissue, human lung tissue, human ovary tissue, human placenta tissue, human skin tissue, human spleen tissue, human testis tissue. Observed molecular weight by Western-blot: 30 kDa

## Preparation

This antibody was obtained by immunization of COPS7A recombinant protein (Accession Number: NM\_016319). Purification method: Antigen affinity purified.

## Formulation

PBS with 0.02% sodium azide and 50% glycerol pH 7.3.

## Storage

Store at -20°C. DO NOT ALIQUOT

## Clonality

Polyclonal

## Ig Type

Rabbit IgG

## Applications

ELISA, WB, IHC, IP

## Dilutions

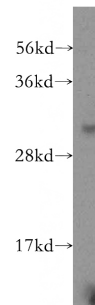
Recommended Dilution:

WB: 1:200-1:2000

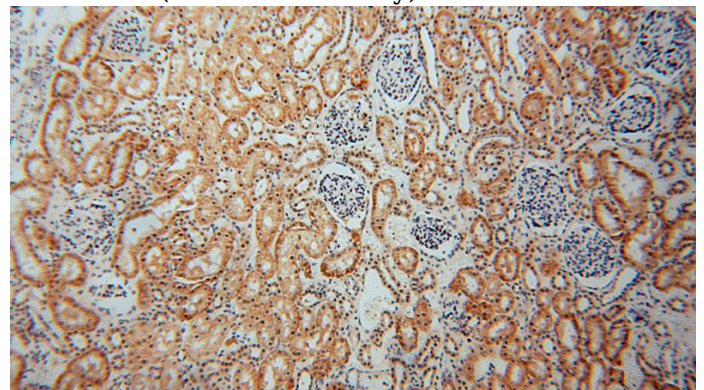
IP: 1:200-1:1000

IHC: 1:20-1:200

## Validations



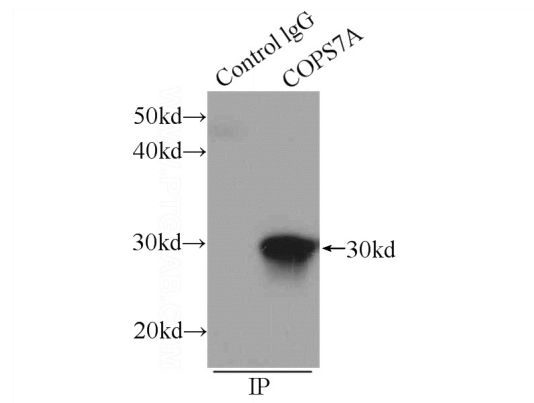
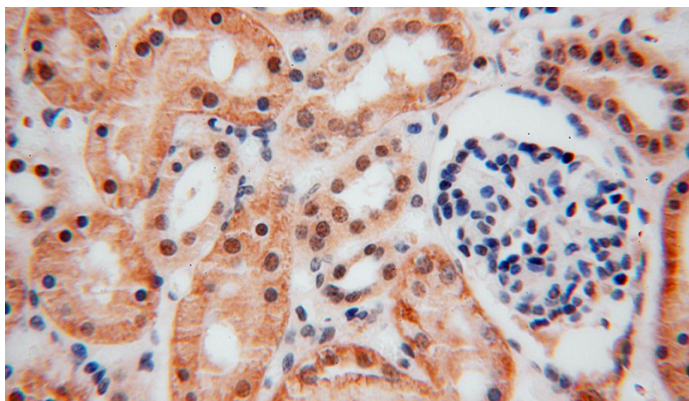
human heart tissue were subjected to SDS PAGE followed by western blot with Catalog No:109465(COPS7A antibody) at dilution of 1:300



Immunohistochemical of paraffin-embedded human kidney using Catalog No:109465(COPS7A antibody) at dilution of 1:50 (under 10x lens)

# COPS7A antibody

Catalog Number: 109465



Immunohistochemical of paraffin-embedded human kidney using Catalog No:109465(COPS7A antibody) at dilution of 1:50 (under 40x lens)

IP Result of anti-COPS7A (IP:Catalog No:109465, 4ug; Detection:Catalog No:109465 1:300) with mouse heart tissue lysate 4000ug.