

COPE antibody



Catalog Number: 109457

Product name

COPE antibody

Immunogen

[Human COPE Recombinant protein \(GST tag\)](#)

Specificity

Human; other species not tested.

Antibody description

COPE Rabbit Polyclonal antibody. Positive IHC detected in human prostate cancer tissue, human liver cancer tissue. Positive IF detected in HepG2 cells. Positive WB detected in PC-3 cells, A431 cells, HEK-293 cells. Observed molecular weight by Western-blot: 36 kDa

Preparation

This antibody was obtained by immunization of COPE recombinant protein (Accession Number: NM_007263). Purification method: Antigen affinity purified.

Formulation

PBS with 0.1% sodium azide and 50% glycerol pH 7.3.

Storage

Store at -20°C. DO NOT ALIQUOT

Clonality

Polyclonal

Ig Type

Rabbit IgG

Applications

ELISA, WB, IF, IHC

Dilutions

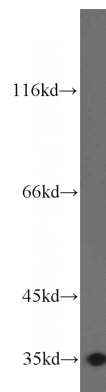
Recommended Dilution:

WB: 1:200-1:2000

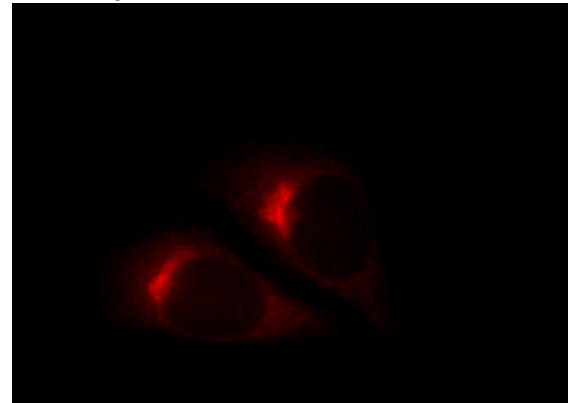
IHC: 1:20-1:200

IF: 1:10-1:100

Validations



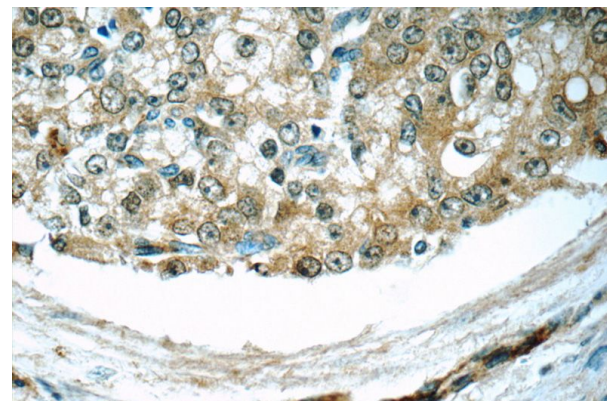
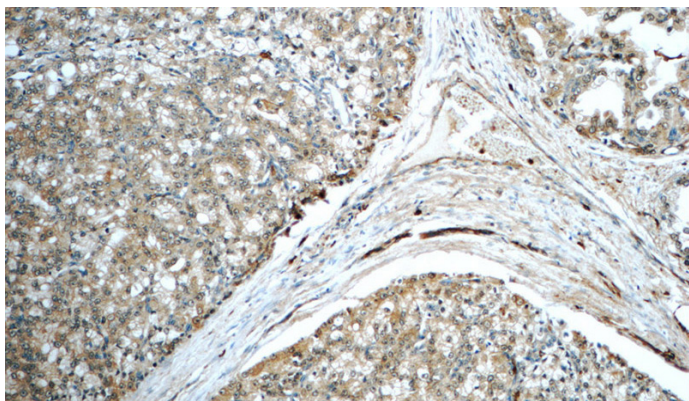
PC-3 cells were subjected to SDS PAGE followed by western blot with Catalog No:109457(COPE antibody) at dilution of 1:500



Immunofluorescent analysis of HepG2 cells, using COPE antibody Catalog No:109457 at 1:25 dilution and Rhodamine-labeled goat anti-rabbit IgG (red).

COPE antibody

Catalog Number: 109457



Immunohistochemistry of paraffin-embedded human prostate cancer tissue slide using Catalog No:109457(COPE Antibody) at dilution of 1:50 (under 10x lens)

Immunohistochemistry of paraffin-embedded human prostate cancer tissue slide using Catalog No:109457(COPE Antibody) at dilution of 1:50 (under 40x lens)