

CNN3 antibody



Catalog Number: 109428

Product name

CNN3 antibody

Recommended Dilution:

WB: 1:200-1:2000

Specificity

Human, Mouse, Rat; other species not tested.

IP: 1:200-1:2000

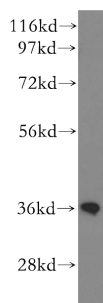
IHC: 1:20-1:200

Antibody description

CNN3 Rabbit Polyclonal antibody. Positive IHC detected in human prostate cancer tissue, human hysteryomyoma tissue, human skin tissue. Positive IF detected in Hela cells. Positive IP detected in HEK-293 cells. Positive WB detected in human kidney tissue, human skeletal muscle tissue. Observed molecular weight by Western-blot: 36 kDa

IF: 1:10-1:100

Validations



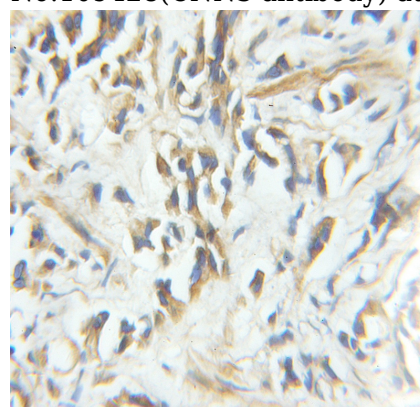
Preparation

This antibody was obtained by immunization of CNN3 recombinant protein (Accession Number: NM_001839). Purification method: Antigen affinity purified.

human kidney tissue were subjected to SDS PAGE followed by western blot with Catalog No:109428(CNN3 antibody) at dilution of 1:500

Formulation

PBS with 0.1% sodium azide and 50% glycerol pH 7.3.



Immunohistochemical of paraffin-embedded human prostate cancer using Catalog No:109428(CNN3 antibody) at dilution of 1:100 (under 10x lens)

Storage

Store at -20°C. DO NOT ALIQUOT

Clonality

Polyclonal

Ig Type

Rabbit IgG

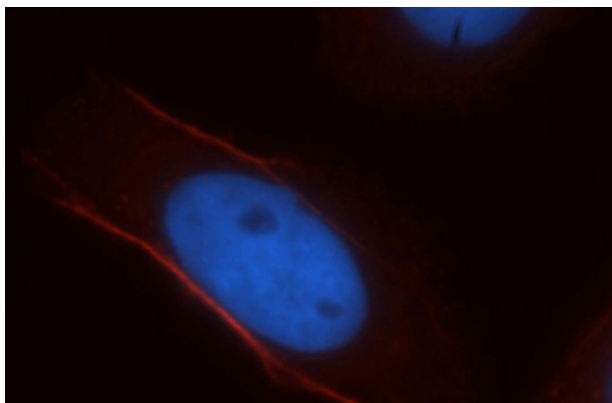
Applications

ELISA, WB, IHC, IF, IP

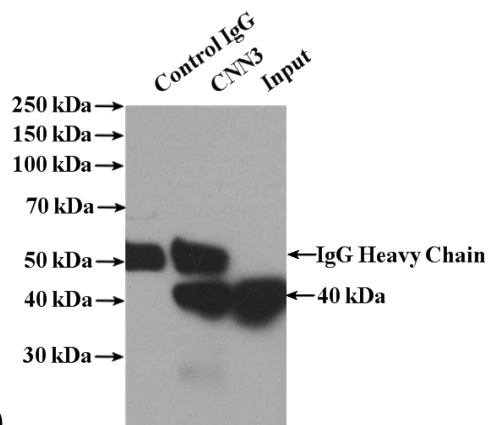
Dilutions

CNN3 antibody

Catalog Number: 109428



Immunofluorescent analysis of HeLa cells, using CNN3 antibody Catalog No:109428 at 1:25 dilution and Rhodamine-labeled goat anti-rabbit IgG (red). Blue pseudocolor = DAPI (fluorescent



DNA dye).

IP Result of anti-CNN3 (IP:Catalog No:109428, 4ug; Detection:Catalog No:109428 1:500) with HEK-293 cells lysate 3000ug.