

CMBL antibody



Catalog Number: 109412

Product name

CMBL antibody

Specificity

human, mouse, rat; other species not tested.

Antibody description

CMBL Rabbit Polyclonal antibody. Positive WB detected in HeLa cells, mouse kidney tissue, mouse liver tissue, mouse skeletal muscle tissue. Observed molecular weight by Western-blot: 28kd

Preparation

This antibody was obtained by immunization of CMBL recombinant protein (Accession Number: XM_017009034). Purification method: Antigen affinity purified.

Formulation

PBS with 0.02% sodium azide and 50% glycerol pH 7.3.

Storage

Store at -20°C. DO NOT ALIQUOT

Clonality

Polyclonal

Ig Type

Rabbit IgG

Applications

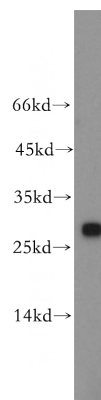
ELISA, WB

Dilutions

Recommended Dilution:

WB: 1:500-1:5000

Validations



HeLa cells were subjected to SDS PAGE followed by western blot with Catalog No:109412(CMBL antibody) at dilution of 1:200