

CLUAP1 antibody

Catalog Number: 109409

Product name

CLUAP1 antibody

IP: 1:200-1:2000

IF: 1:20-1:200

Specificity

Human, Mouse, Rat; other species not tested.

Antibody description

CLUAP1 Rabbit Polyclonal antibody. Positive WB detected in mouse testis tissue, COLO 320 cells, HepG2 cells, Y79 cells. Positive IP detected in HepG2 cells. Positive IF detected in MDCK cells. Observed molecular weight by Western-blot: 53 kDa

Preparation

This antibody was obtained by immunization of CLUAP1 recombinant protein (Accession Number: NM_015041). Purification method: Antigen affinity purified.

Formulation

PBS with 0.02% sodium azide and 50% glycerol pH 7.3.

Storage

Store at -20°C. DO NOT ALIQUOT

Clonality

Polyclonal

Ig Type

Rabbit IgG

Applications

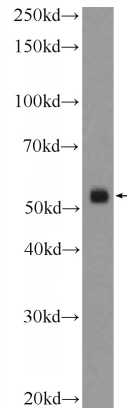
ELISA, WB, IF, IP

Dilutions

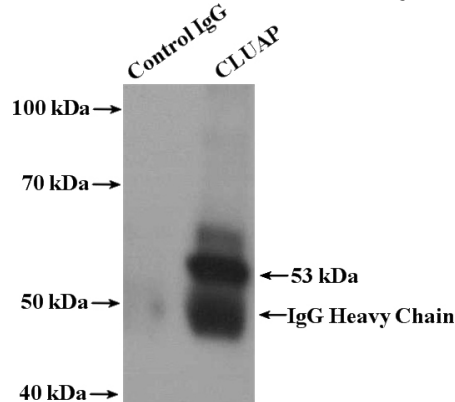
Recommended Dilution:

WB: 1:200-1:2000

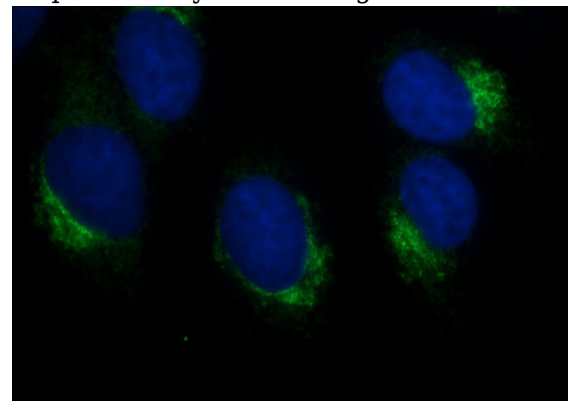
Validations



mouse testis tissue were subjected to SDS PAGE followed by western blot with Catalog No:109409 (CLUAP1 Antibody) at dilution of 1:600



IP Result of anti-CLUAP1 (IP: Catalog No:109409, 4ug; Detection: Catalog No:109409 1:600) with HepG2 cells lysate 2400ug.



Immunofluorescent analysis of MDCK cells using Catalog No:109409 (CLUAP1 Antibody) at dilution

CLUAP1 antibody



Catalog Number: 109409

of 1:50 and Alexa Fluor 488-conjugated AffiniPure Goat Anti-Rabbit IgG(H+L)