

# CLTCL1 antibody



Catalog Number: 109408

## Product name

CLTCL1 antibody

IP: 1:200-1:1000

IHC: 1:20-1:200

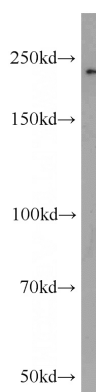
## Specificity

Human, Mouse; other species not tested.

## Validations

## Antibody description

CLTCL1 Rabbit Polyclonal antibody. Positive IHC detected in human testis tissue, human heart tissue. Positive IP detected in HeLa cells. Positive WB detected in Jurkat cells, NIH/3T3 cells. Observed molecular weight by Western-blot: 180-210kd



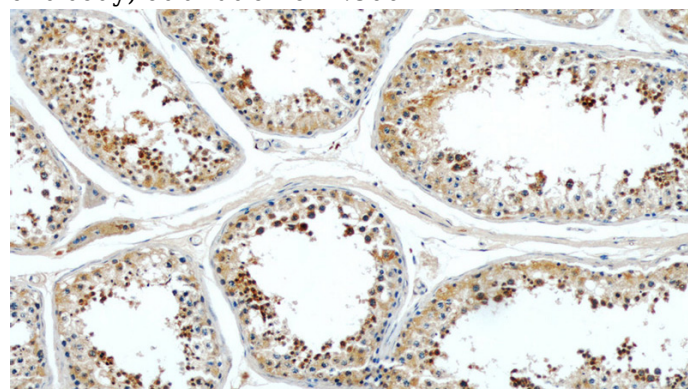
## Preparation

This antibody was obtained by immunization of Peptide (Accession Number: NM\_007098). Purification method: Antigen affinity purified.

Jurkat cells were subjected to SDS PAGE followed by western blot with Catalog No:109408(CL TCL1 antibody) at dilution of 1:800

## Formulation

PBS with 0.02% sodium azide and 50% glycerol pH 7.3.



## Storage

Store at -20°C. DO NOT ALIQUOT

## Clonality

Polyclonal

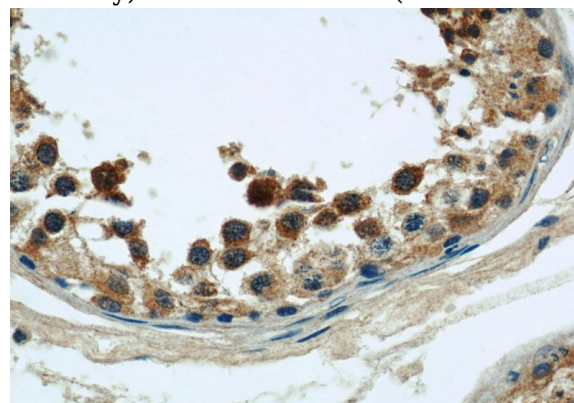
Immunohistochemical of paraffin-embedded human testis using Catalog No:109408(CL TCL1 antibody) at dilution of 1:50 (under 10x lens)

## Ig Type

Rabbit IgG

## Applications

ELISA, WB, IHC, IP



## Dilutions

Recommended Dilution:

WB: 1:200-1:2000


Immunohistochemical of paraffin-embedded human testis using Catalog No:109408(CL TCL1

# CLTCL1 antibody



Catalog Number: 109408

---

antibody) at dilution of 1:50 (under 40x lens) 

IP Result of anti-CLTCL1 (IP:Catalog No:109408,

4ug; Detection:Catalog No:109408 1:300) with HeLa cells lysate 1200ug.