

CLIC1 antibody



Catalog Number: 109388

Product name

CLIC1 antibody

Recommended Dilution:

WB: 1:200-1:2000

Specificity

Human, Mouse, Rat; other species not tested.

IP: 1:200-1:1000

IHC: 1:20-1:200

Antibody description

CLIC1 Rabbit Polyclonal antibody. Positive IP detected in HeLa cells. Positive WB detected in HL-60 cells, HeLa cells. Positive IHC detected in human small intestine tissue, human colon tissue, human kidney tissue, human pancreas tissue. Positive IF detected in HepG2 cells, HeLa cells. Observed molecular weight by Western-blot: 27-32 kDa

IF: 1:20-1:200

Preparation

This antibody was obtained by immunization of CLIC1 recombinant protein (Accession Number: NM_001288). Purification method: Antigen affinity purified.

Formulation

PBS with 0.02% sodium azide and 50% glycerol pH 7.3.

Storage

Store at -20°C. DO NOT ALIQUOT

Clonality

Polyclonal

Ig Type

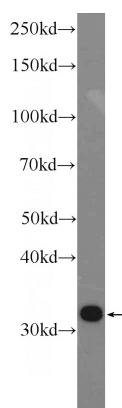
Rabbit IgG

Applications

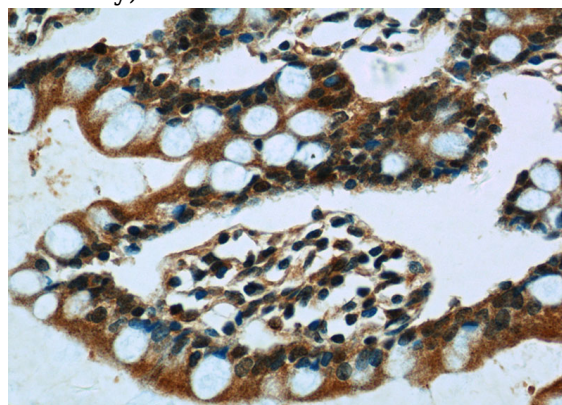
ELISA, IF, WB, IHC, IP

Dilutions

Validations



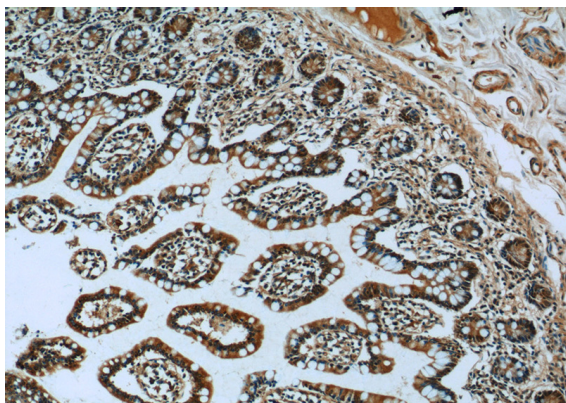
HL-60 cells were subjected to SDS PAGE followed by western blot with Catalog No:109388(CLIC1 Antibody) at dilution of 1:600



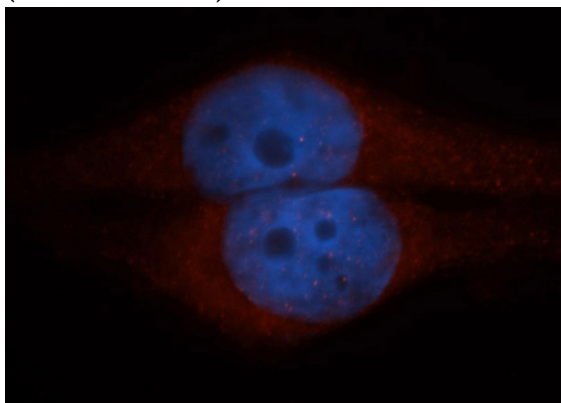
Immunohistochemistry of paraffin-embedded human small intestine tissue slide using Catalog No:109388(CLIC1 Antibody) at dilution of 1:50 (under 40x lens)

CLIC1 antibody

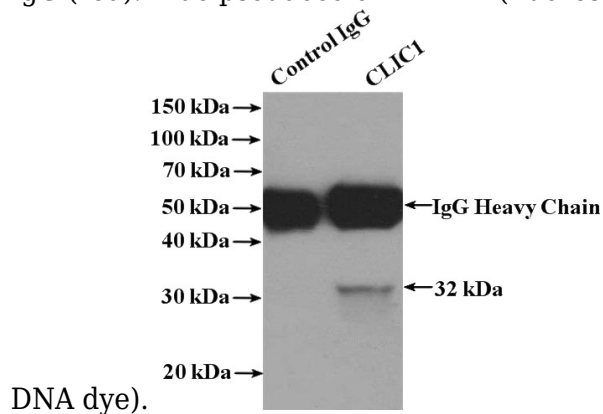
Catalog Number: 109388



Immunohistochemistry of paraffin-embedded human small intestine tissue slide using Catalog No:109388(CLIC1 Antibody) at dilution of 1:50 (under 10x lens)



Immunofluorescent analysis of HepG2 cells, using CLIC1 antibody Catalog No:109388 at 1:50 dilution and Rhodamine-labeled goat anti-rabbit IgG (red). Blue pseudocolor = DAPI (fluorescent



IP Result of anti-CLIC1 (IP:Catalog No:109388, 4ug; Detection:Catalog No:109388 1:300) with HeLa cells lysate 1200ug.